



CRITERION 1 - CURRICULAR ASPECTS

KEY INDICATOR 1.4. FEEDBACK SYSTEM

Metric No 1.4.2: Feedback process of the Institution

S.No	Content	Page No.
1	Feedback Policy	02
2	Feedback Analysis Report	03
3	Action Taken Report	20




Dr. J.SUNDARARAJAN,
B.E., M.Tech., Ph.D.,
Principal
N.P.R. College of Engineering & Technology
Natham, Dindigul (Dt) - 624 401.



NPR

College of Engineering & Technology

Approved by AICTE, Affiliated to Anna University,
Accredited by NAAC WITH 'A' GRADE | Recognized by UGC under 2 (f)
Natham, Dindigul - 624 401. Web: www.nprcet.org



FEEDBACK POLICY

Efficient functioning of an educational institution demands continuous refinement. Refinement needs feedback mechanism. NPRCET has adopted the feedback system that collects the suggestions from stakeholders on Teaching – Learning system of each programme. This helps to fine-tune Teaching – Learning system along with the curriculum. NPRCET follows the mechanism for collection of feedback from Students, Faculty, Alumni and Employers on Curriculum is explained in detail below.

Feedback Collection Process:

Feedback forms with questions those completely aligned along with Curriculum are designed in individual website. Generated links are shared with corresponding stakeholders for collecting the feedback. Feedback collection has done in specific time period. Responses for each question is recorded in website

Feedback Analysis Process:

- Stakeholder wise analysis report as has reviewed in department meeting along with Placement co-coordinator and IQAC co-coordinator.
- For each question target has been set before the collection of feedback. In the analysis report, questions with response below the set target , for Students feedback 75% and 2.25 in 3 index scale, for Alumni, Faculty and Employer feedbacks 80% and 2.4 in 3 index scale have been highlighted
- In the department meeting, actions are proposed and assigned to person/committees/ department/units. If the response is much below the target level, special committee has been formed to take corrective actions.

Execution of action proposed:

- The assigned person's committee/department/units special committees plan the road map executes the action proposed by IQAC
- Based on feedback received from stakeholders, add on courses are designed and offered. The curriculum of the existing add on courses are also updated as per employer recommendation to meet the industry expectation
- Swayam NPTEL and spoken tutorial courses are suggested for students
- Other initiatives such as Internship, Project based learning workshop, self-learning practices etc.,



Dr. J.SUNDARARAJAN,

B.E., M.Tech., Ph.D.,

Principal

N.P.R. College of Engineering & Technology

Natham, Dindigul (Dt) - 624 401.



NPR

College of Engineering & Technology

Approved by AICTE, Affiliated to Anna University,
Accredited by NAAC WITH 'A' GRADE | Recognized by UGC under 2 (f)
Natham, Dindigul - 624 401. Web: www.nprcet.org



Students Feedback on Curriculum Info – Feedback Analysis Report

Academic Year: 2021-2022

Report Date:14/02/2022

From:10/01/2022 To:11/02/2022

S.No	Question's	Excellent	Very Good	Good	Fair	Poor	Total Weightage	Percentage	3-Scale Weightage
1	How do you rate the sequence of the Courses that you have studied are in sequence to what you have studied in the previous semester?	365	129	95	26	15	2693	85.49	2.56
2	How do you rate the syllabus of the courses that you have studied in relation to the competencies expected out of the course?	328	152	120	22	8	2660	84.44	2.53
3	How do you rate the relevance of the units in Syllabus relevant to the course?	290	190	115	26	9	2616	83.05	2.49
4	How do you rate the sequence of the units in the course?	220	240	124	38	8	2516	79.87	2.40
5	How do you rate the allocation of the credits to the courses?	215	230	130	40	15	2480	78.73	2.36
6	How do you rate the distribution of the contact hours among the course components (L-T-P)?	242	206	127	35	20	2505	79.52	2.39
7	How do you rate the offering of the electives in terms of their relevance to the specialization streams?	290	150	110	64	16	2524	80.13	2.40





NPR

College of Engineering & Technology

Approved by AICTE, Affiliated to Anna University,
Accredited by NAAC WITH 'A' GRADE | Recognized by UGC under 2 (f)
Natham, Dindigul - 624 401. Web: www.nprcet.org



8	How do you rate the electives offered in relation to the Technological advancements?	220	180	163	47	20	2423	76.92	2.31
9	How do you rate the relevance of the Text Books and reference books by their International recognition to the Courses?	250	176	165	29	10	2517	79.90	2.40
10	Rate the Size of syllabus in terms of the load on the student	210	196	174	37	13	2443	77.56	2.33
11	Rate the courses in terms of extra learning or self learning considering the design of the courses	186	214	126	89	15	2357	74.83	2.24
12	Rate the courses in terms of sequence of offering considering whether the preceding courses have been covered	240	190	128	65	7	2481	78.76	2.36
13	How do you Rate the loading of the courses in a semester?	239	203	130	41	17	2496	79.24	2.38
14	How do you rate the evaluation scheme designed for each of the course?	225	219	136	34	16	2493	79.14	2.37
15	How do you rate the objectives stated for each of the course?	220	199	165	29	17	2466	78.29	2.35





NPR

College of Engineering & Technology

Approved by AICTE, Affiliated to Anna University,
Accredited by NAAC WITH 'A' GRADE | Recognized by UGC under 2 (f)
Natham, Dindigul - 624 401. Web: www.nprcet.org



16	How do you rate competencies expected out of the course?	230	185	145	55	15	2450	77.78	2.33
17	How do you rate the composition of the courses in terms of Basic science, Engineering science, Humanities, Discipline core, discipline elective, open elective, project etc.?	245	186	104	67	28	2443	77.56	2.33
18	How do you rate the experiments in relation to the real life Applications?	210	175	140	80	25	2355	74.76	2.24
19	How do you rate the domain used for designing the experiments for the LAB components?	215	176	129	65	45	2341	74.32	2.23
20	How do you rate the courses having LAB components?	239	174	88	89	40	2373	75.33	2.26
AVERAGE SCORE							2482	78.78	2.36



Dr. JSUNDARARAJAN,

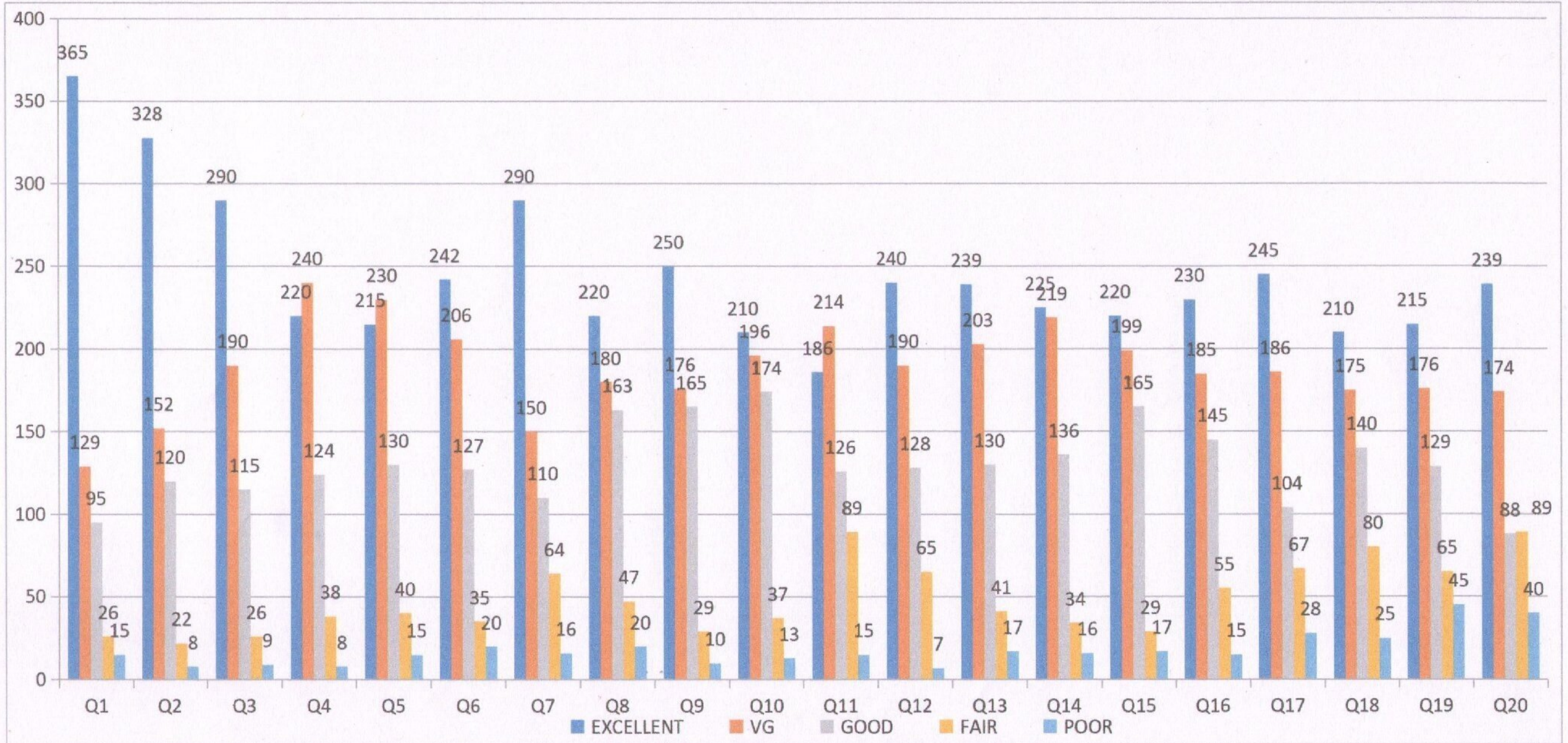
B.E., M.Tech., Ph.D.,

Principal

N.P.R. College of Engineering & Technology
Natham, Dindigul (Dt) - 624 401.



STUDENTS FEEDBACK



Students Feedback from 10/01/2022 to 11/02/2022





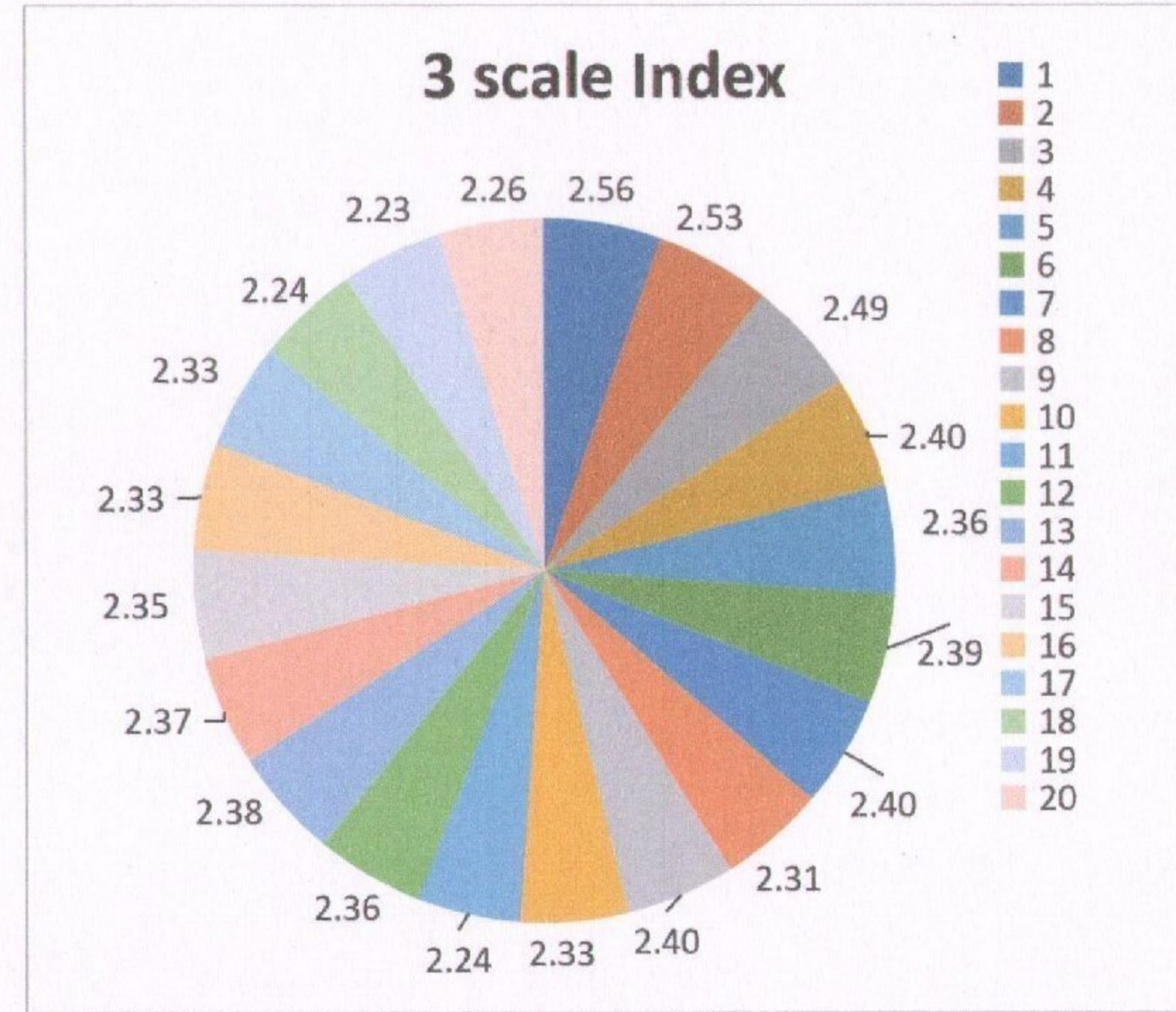
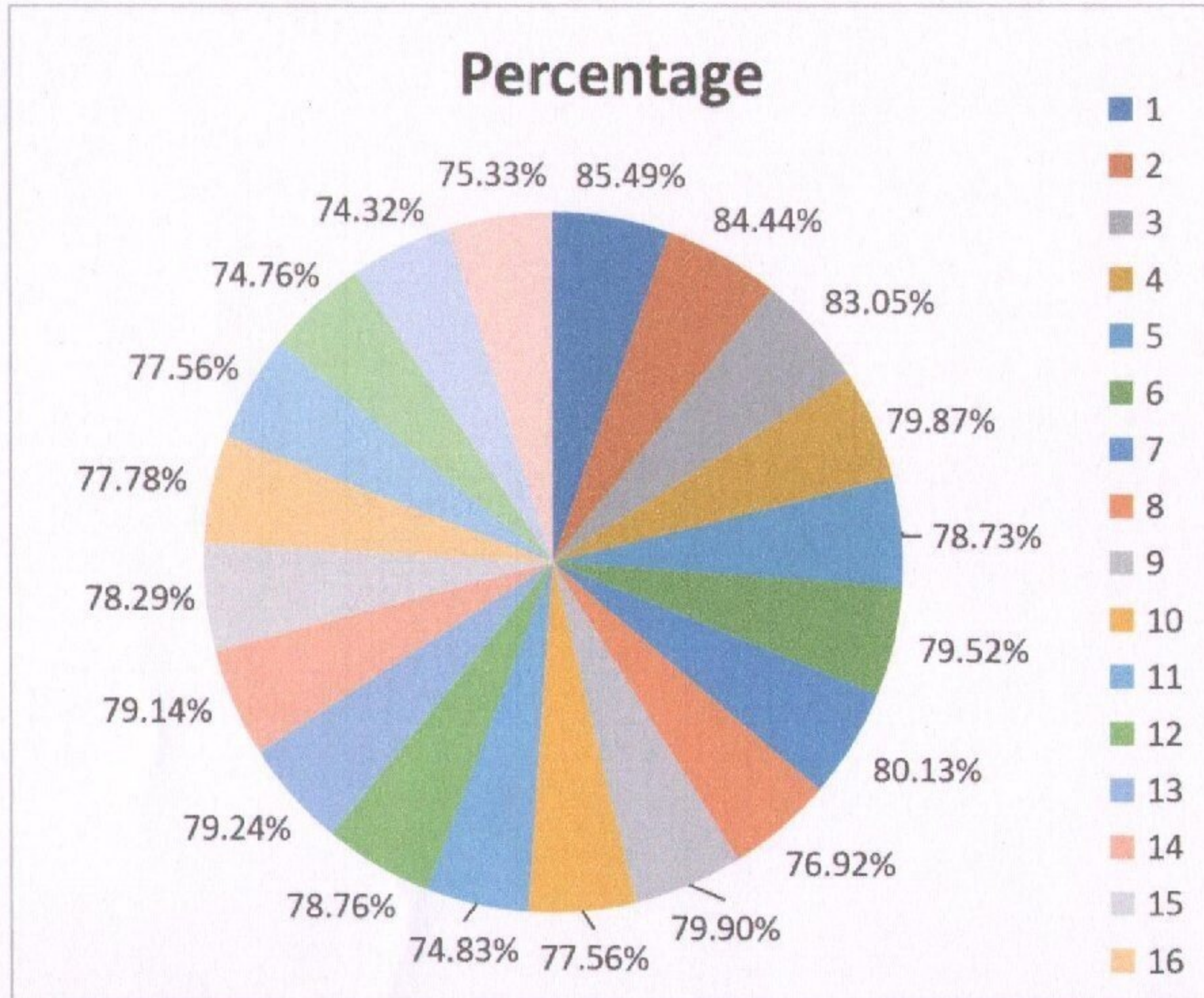
NPR

College of Engineering & Technology

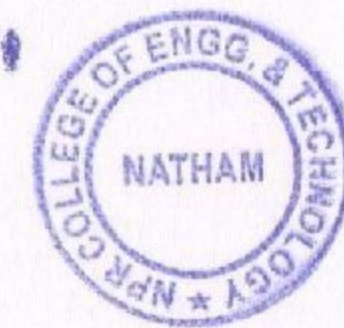
Approved by AICTE, Affiliated to Anna University,
Accredited by NAAC WITH 'A' GRADE | Recognized by UGC under 2 (f)
Natham, Dindigul - 624 401. Web: www.nprcet.org



STUDENTS FEEDBACK



Students Feedback from 10/01/2022 to 11/02/2022



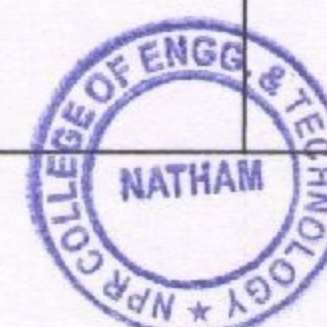


Faculty Feedback on Curriculum Info – Feedback Analysis Report

Academic Year: 2021-2022

Report Date: 14/02/2022 From: 10/01/2022 To: 11/02/2022

S.No	Question's	Excellent	Very Good	Good	Fair	Poor	Total Weightage	Percentage	3-Scale Weightage
1	The Learning Objectives are clear and appropriate to the program	62	28	9	0	0	449	90.71	2.72
2	The curriculum and Syllabus are well organized and suitable to the program.	51	39	9	0	0	438	88.48	2.65
3	The text books/ reference books are well suited to the courses.	49	40	10	0	0	435	87.88	2.64
4	The system followed by the university for the design and development of curriculum is effective	31	31	37	0	0	390	78.79	2.36
5	Provision to update curriculum time to time.	32	33	34	0	0	394	79.60	2.39
6	How do you rate the distribution of contact hours among the course components?	45	31	23	0	0	418	84.44	2.53
7	The curriculum has a good balance between theory and practical.	34	29	36	0	0	394	79.60	2.39





NPR


College of Engineering & Technology

Approved by AICTE, Affiliated to Anna University,
Accredited by NAAC WITH 'A' GRADE | Recognized by UGC under 2 (f)
Natham, Dindigul - 624 401. Web: www.nprcet.org



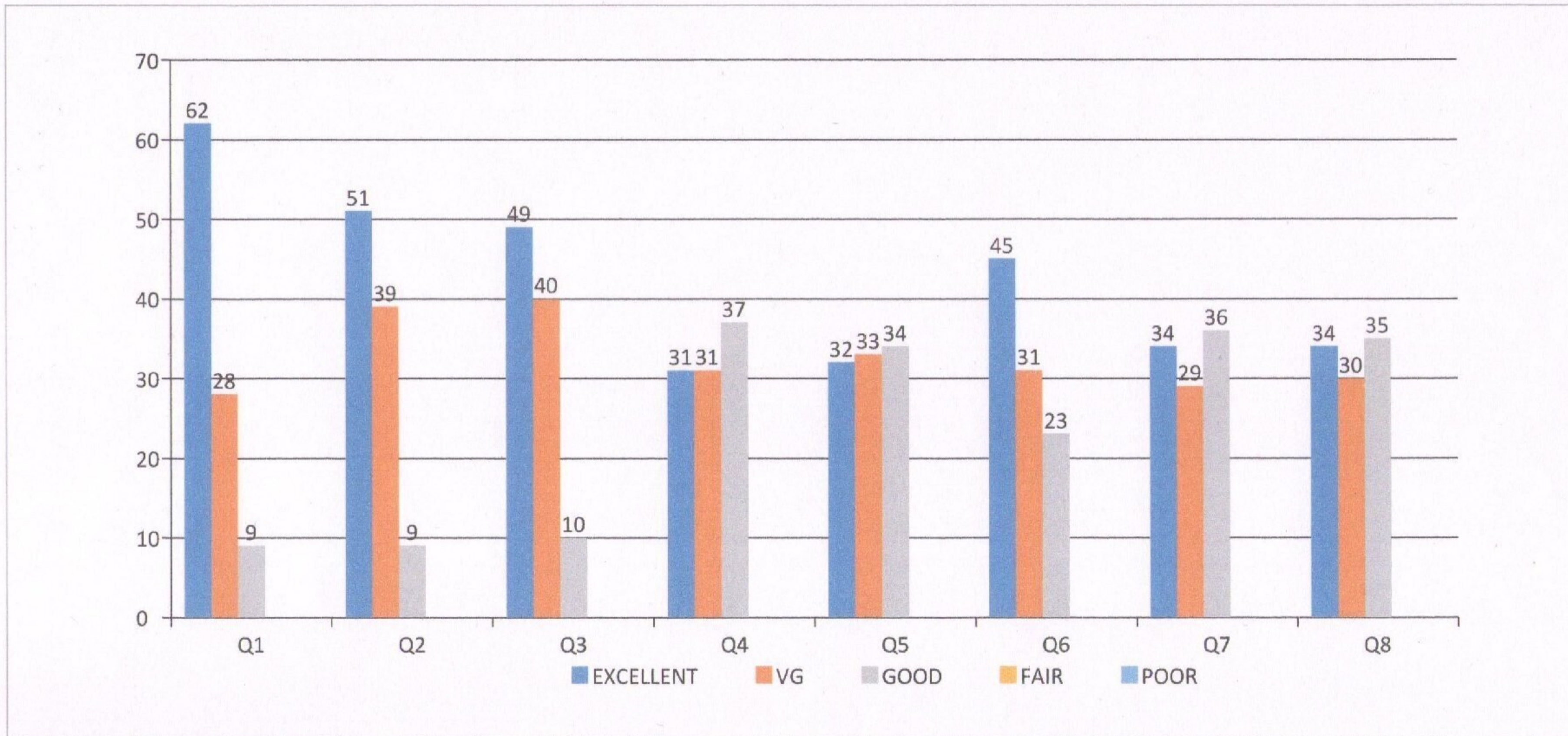
8	How do rate the electives offered in your program for the technological advancements?	34	30	35	0	0	395	79.80	2.39
AVERAGE SCORE							414.13	83.66	2.51



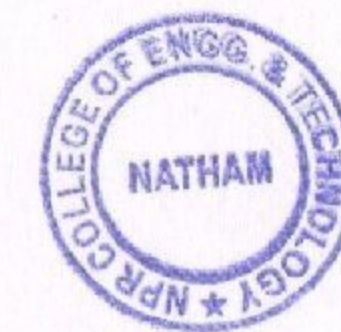

Dr. J.SUNDARARAJAN,
B.E., M.Tech., Ph.D.,
Principal
N.P.R. College of Engineering & Technology
Natham, Dindigul (Dt) - 624 401.



FACULTY FEEDBACK

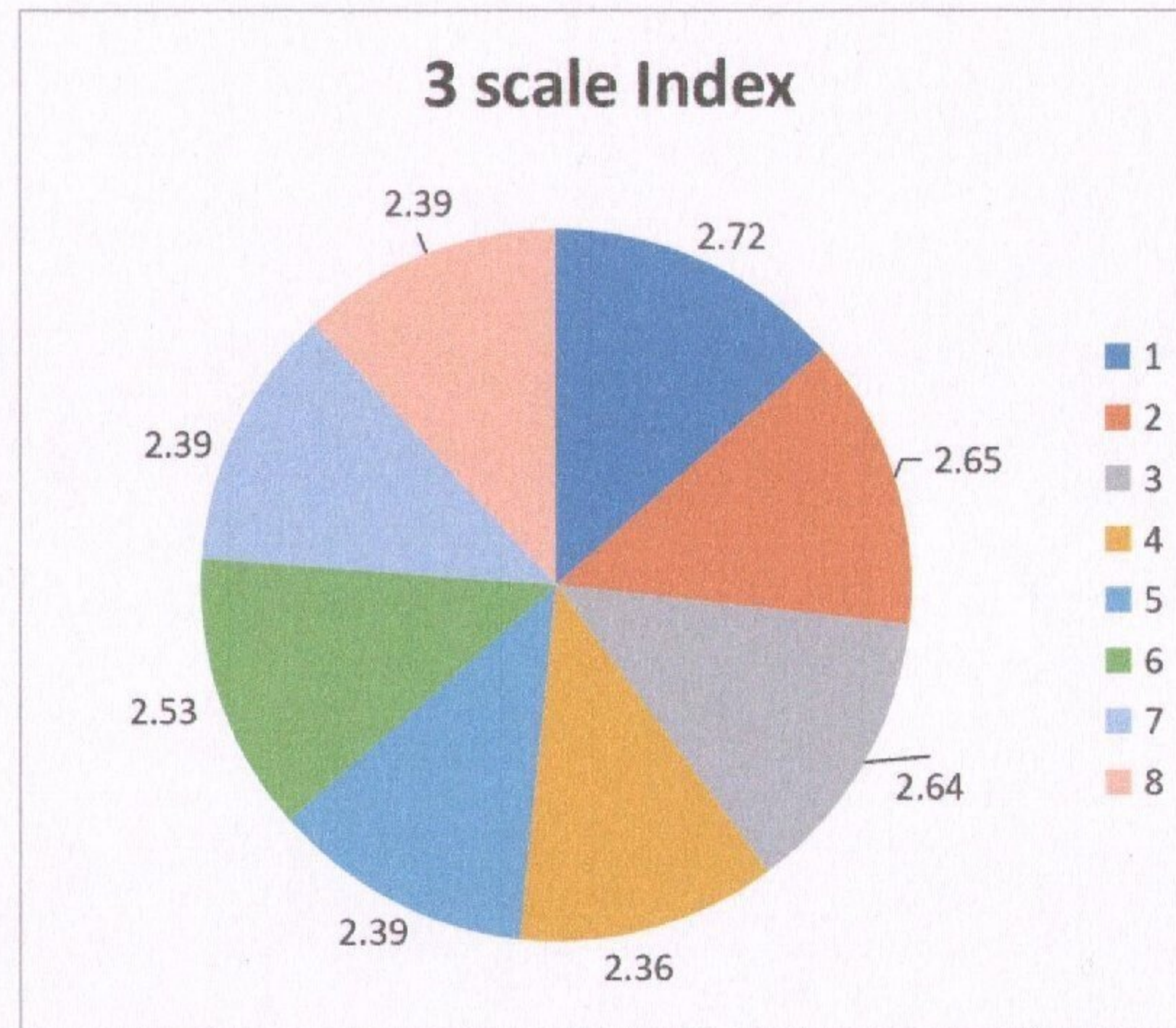
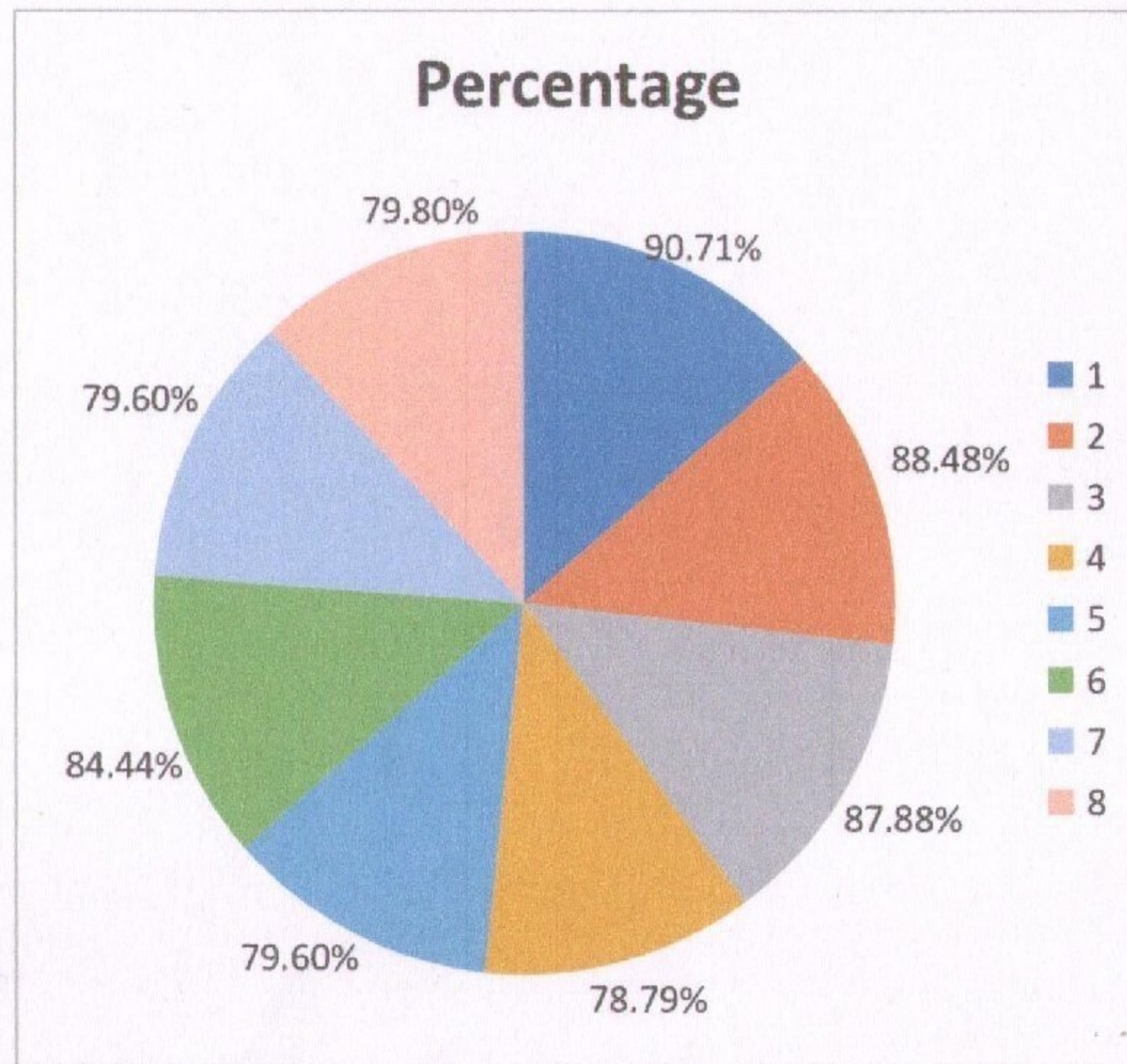


Faculty Feedback From 10/01/2022 To 11/02/2022





FACULTY FEEDBACK



Faculty Feedback From 10/01/2022 To 11/02/2022





NPR

College of Engineering & Technology

Approved by AICTE, Affiliated to Anna University,
Accredited by NAAC WITH 'A' GRADE | Recognized by UGC under 2 (f)
Natham, Dindigul - 624 401. Web: www.nprcet.org



Employers Feedback on Curriculum Info – Feedback Analysis Report

Academic Year: 2021-2022 Report Date: 14/02/2022 From: 10/01/2022 To: 11/02/2022

S.No	Question's	Excellent	Very Good	Good	Fair	Poor	Total Weightage	Percentage	3-Scale Weightage
1	How do you rate the syllabus relevant to the real life situations?	9	3	0	0	0	57	95.00	2.85
2	How do you rate the learning values (skills, concepts, knowledge & analytical abilities) present in the syllabus?	8	4	0	0	0	56	93.33	2.80
3	How do you rate the relevance for implementation in projects?	11	1	0	0	0	59	98.33	2.95
4	How do you rate the gap filling ability of the available syllabus to bridge academics and Industry?	10	1	1	0	0	57	95.00	2.85
5	How do you rate the design of the curriculum on developing the employability?	4	3	5	0	0	47	78.33	2.35
6	How do you rate the design of	4	3	5	0	0	47	78.33	2.35





NPR

College of Engineering & Technology

Approved by AICTE, Affiliated to Anna University,
Accredited by NAAC WITH 'A' GRADE | Recognized by UGC under 2 (f)
Natham, Dindigul - 624 401. Web: www.nprcet.org



	curriculum on nurturing the entrepreneurship?								
7	How do you rate the syllabus updation regarding advanced topics?	6	5	1	0	0	53	88.33	2.65
8	How do you rate the available teaching tools to enhance the understanding of subjects?	5	5	2	0	0	51	85.00	2.55
AVERAGE SCORE							209	81.96	2.46



JS
Dr. JSUNDARARAJAN,
B.E., M.Tech., Ph.D.,
Principal
N.P.R. College of Engineering & Technology
Natham, Dindigul (Dt) - 624 401.



EMPLOYER FEEDBACK

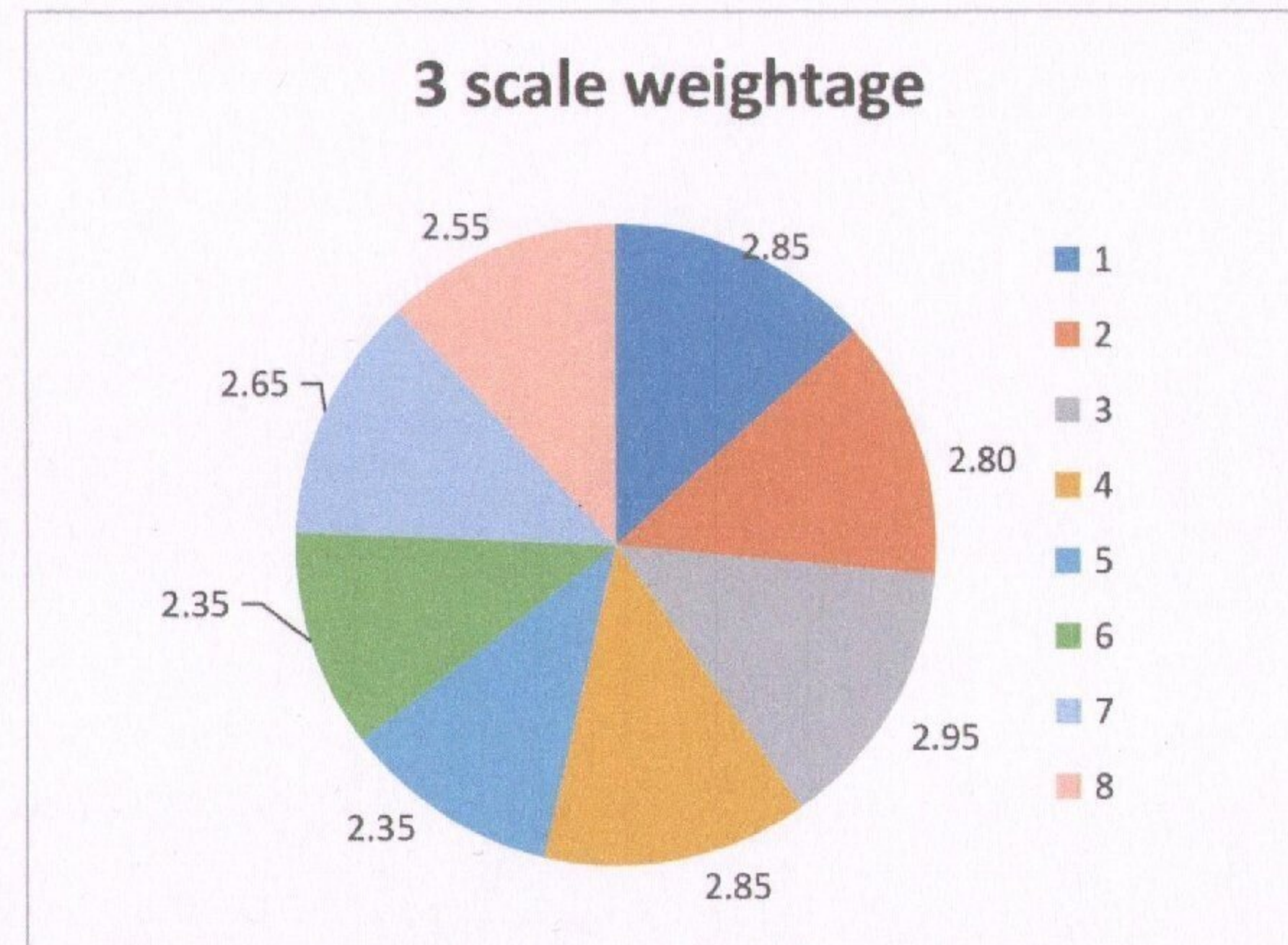
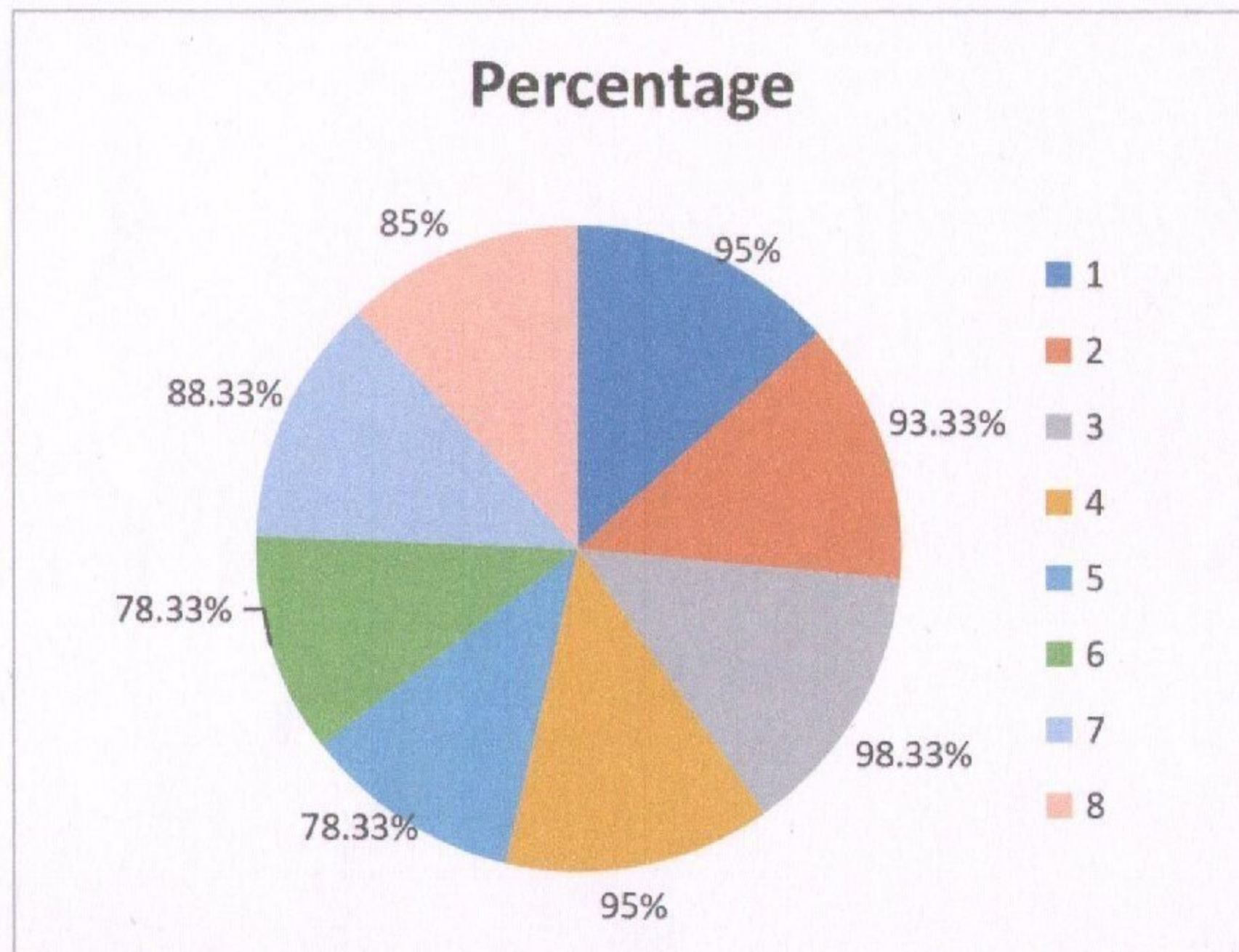


Employer Feedback From 10/01/2022 To 11/02/2022





EMPLOYER FEEDBACK



Employer Feedback From 10/01/2022 To 11/02/2022





Alumni Feedback on Curriculum Info – Feedback Analysis Report

Academic Year: 2021-2022 Report Date:14/02/2022 From:10/01/2022 To:11/02/2022

S.No	Question's	Excellent	Very Good	Good	Fair	Poor	Total Weightage	Percentage	3-Scale Weightage
1	How do you rate relevance of the courses in relation to the program?	198	82	63	7	0	1521	86.91	2.61
2	How do you rate the sequence of the courses included into the programs?	190	95	55	9	1	1514	86.51	2.60
3	How do you rate the competencies in relation to the course content?	165	103	75	7	0	1476	84.34	2.53
4	How do rate the sequence of the topics in the units?	140	113	88	9	0	1434	81.94	2.46
5	Rate the offering of the in relation to the specialization streams?	121	130	90	9	0	1413	80.74	2.42
6	How do you rate the offering of the electives in relation to the Technological advancements?	139	120	74	17	0	1431	81.77	2.45
7	How do you rate the courses which are skills related suiting to the Industry included into the programs?	110	118	91	30	1	1356	77.49	2.32





NPR

College of Engineering & Technology

Approved by AICTE, Affiliated to Anna University,
Accredited by NAAC WITH 'A' GRADE | Recognized by UGC under 2 (f)
Natham, Dindigul - 624 401. Web: www.nprcet.org



8	How do you rate the domain used for designing the experiments in terms of the suitability of the Tools to the domain?	115	109	89	35	2	1350	77.14	2.31
9	How do you rate the experiments in terms of their relevance to the real life application?	113	105	96	34	2	1343	76.74	2.30
10	How do you rate the courses that you have learnt in relation to your current Job?	166	115	57	12	0	1485	84.86	2.55
AVERAGE SCORE							1432.30	81.85	2.46



Dr. J.SUNDARARAJAN,
B.E., M.Tech., Ph.D.,
Principal
N.P.R. College of Engineering & Technology
Natham, Dindigul (Dt) - 624 401.



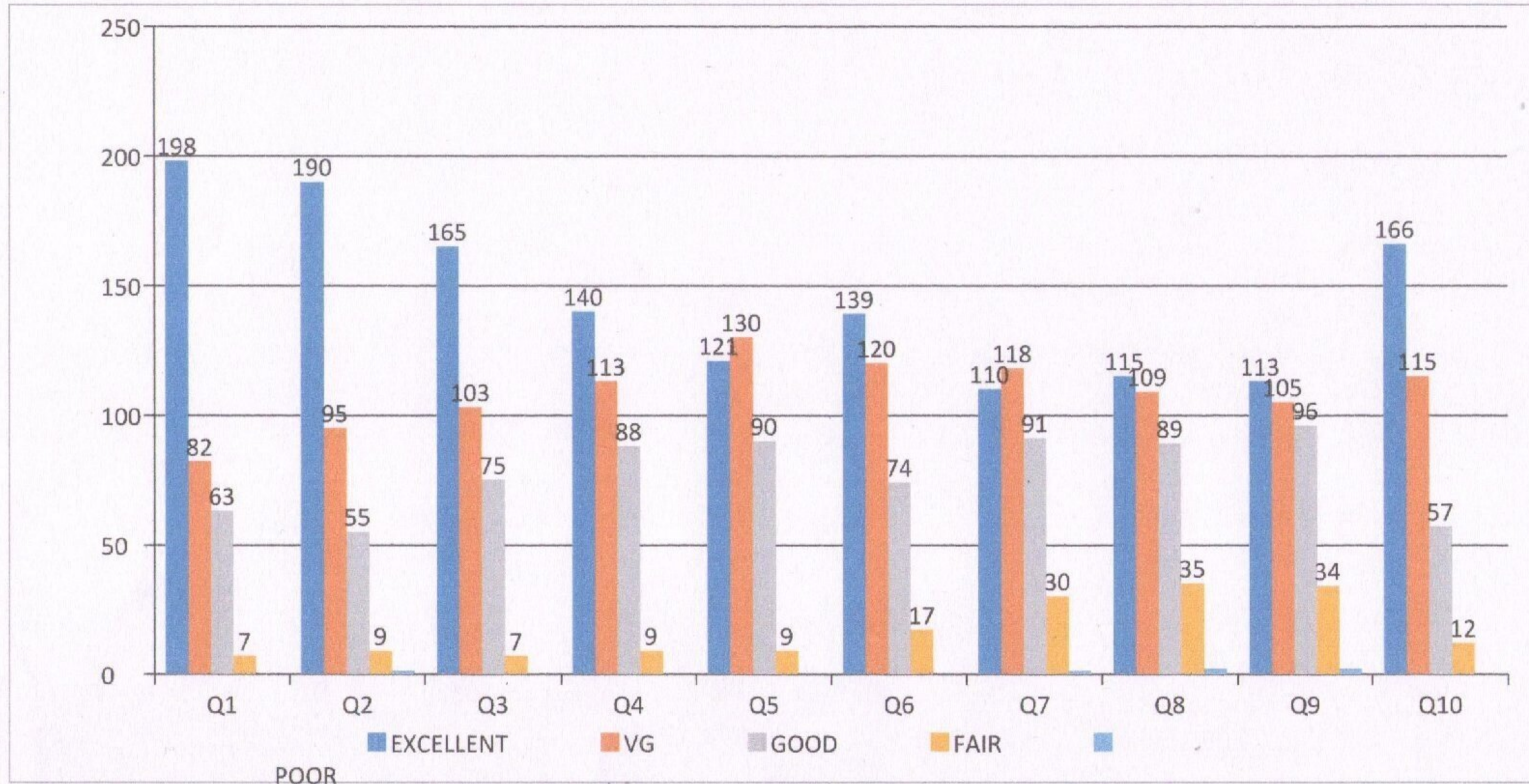
NPR

College of Engineering & Technology

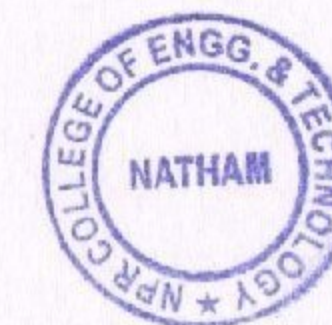
Approved by AICTE, Affiliated to Anna University,
Accredited by NAAC WITH 'A' GRADE | Recognized by UGC under 2 (f)
Natham, Dindigul - 624 401. Web: www.nprcet.org



ALUMNI FEEDBACK



Alumni Feedback From 10/01/2022 To 11/02/2022





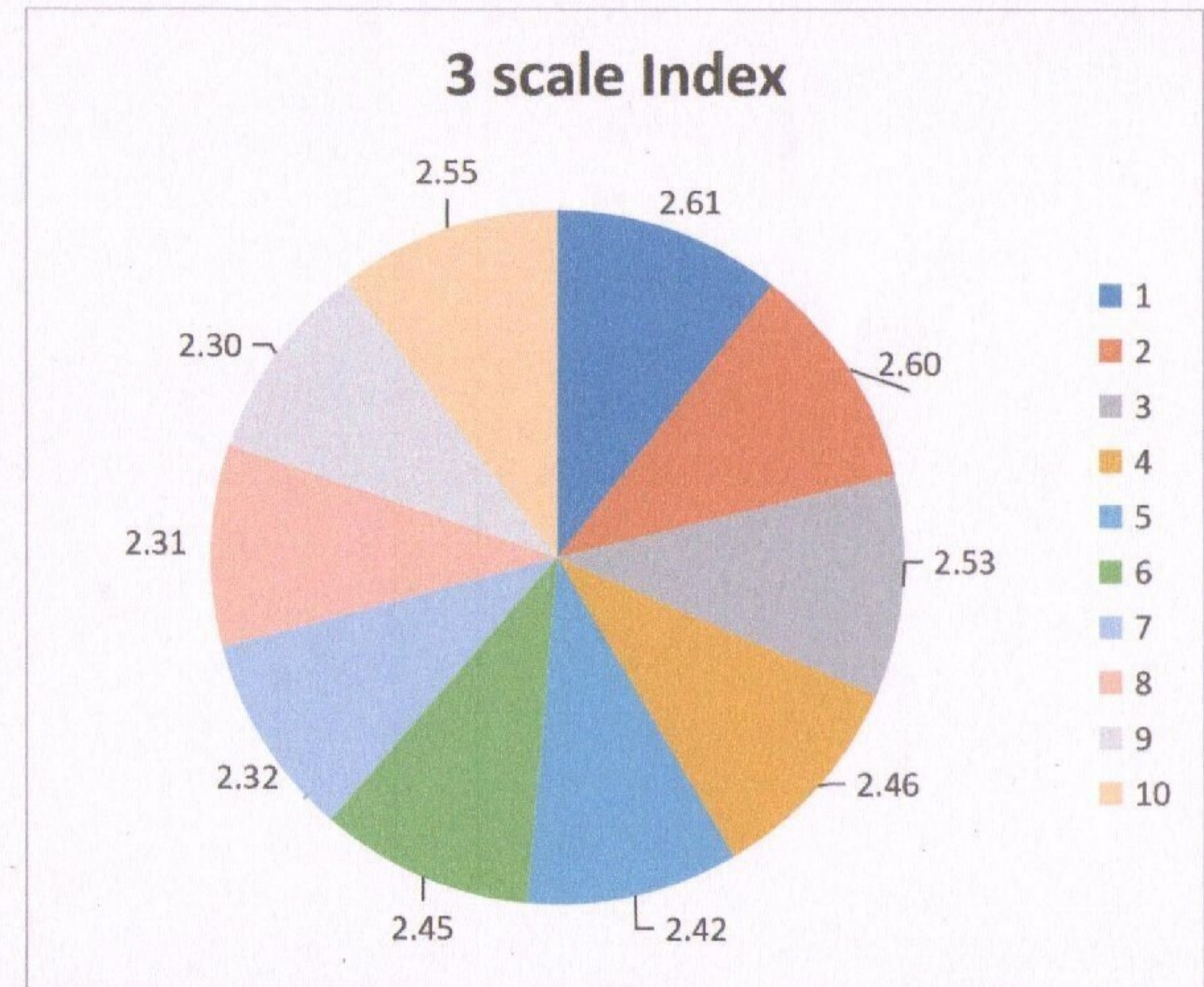
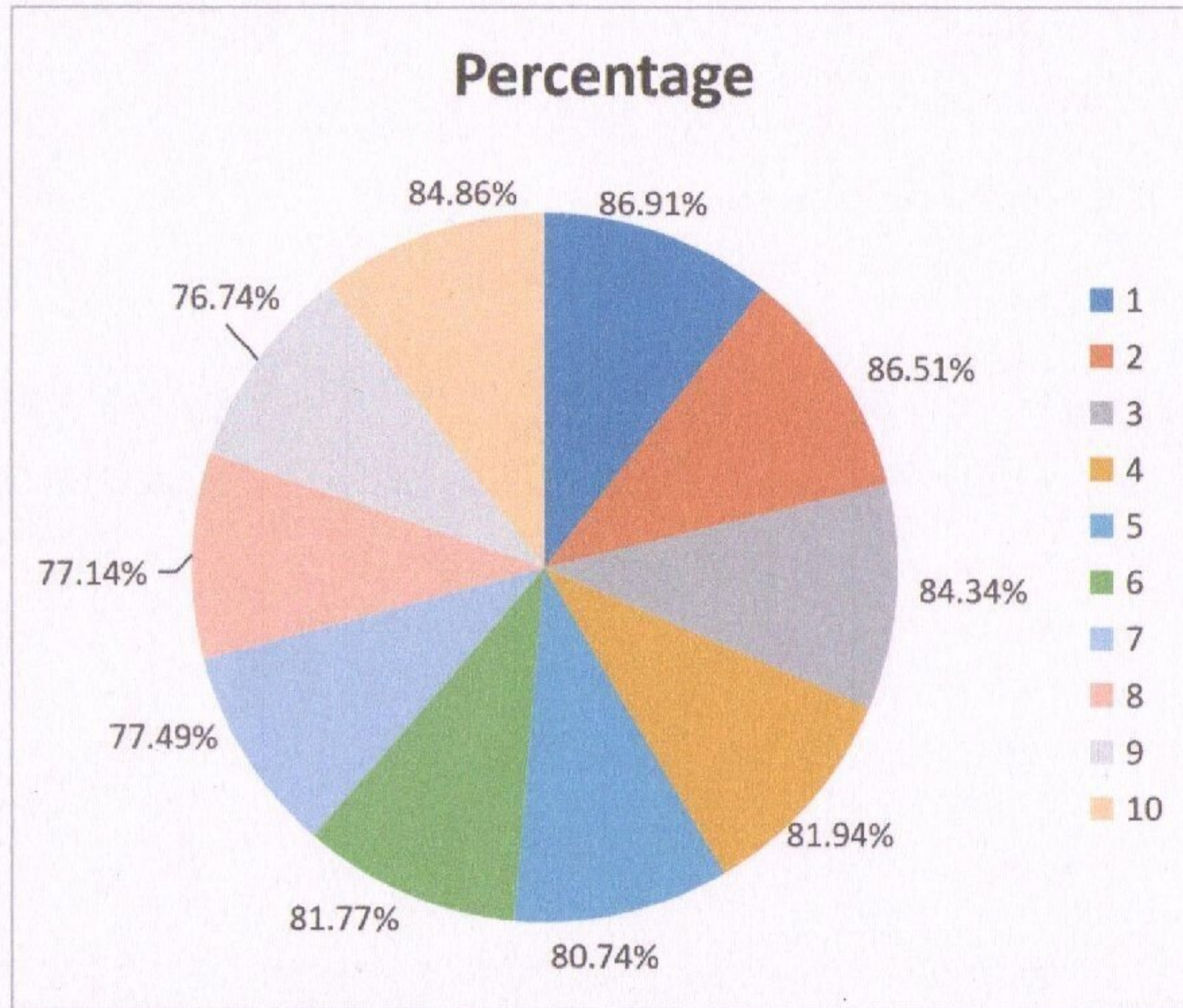
NPR

College of Engineering & Technology

Approved by AICTE, Affiliated to Anna University,
Accredited by NAAC WITH 'A' GRADE | Recognized by UGC under 2 (f)
Natham, Dindigul - 624 401. Web: www.nprcet.org



ALUMNI FEEDBACK

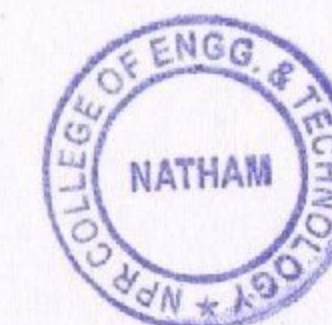


Alumni Feedback From 10/01/2022 To 11/02/2022



Action Taken Report for the Analysis of Feedback collected from Students, Faculty, Alumni and Employer

Feedback Collected From	Number of Responses	Threshold	Questionnaires with less threshold	Action Taken
Student	630	2.24/3	How do you rate the domain used for designing the experiments for lab components?	More mini projects are planned to give students from upcoming semester.
		2.24/3	How do you rate the experiments in relation to there in life Applications?	Industrial visit, Industry internship is executed to have better understanding in relevant subjects.
		2.23/3	Rate the courses in terms of extra learning or self-learning considering the design of the courses?	Students are motivated to attend Add-On courses, Symposium and on design skills.
Faculty	99	2.36/3	The system followed by the university for the design and development of curriculum is effective?	Faculties are instructed to refer Anna University prescribed books, To attend AICTE FDP, NPTEL courses, etc.
		2.39/3	Provision to update curriculum time to time.	It is planned to analyses the curriculum gap and to include the content beyond syllabus as per the industrial need.
		2.39/3	How do rate the electives offered in your program for the technological advancements?	
		2.39/3	The curriculum has a good balance between theory and practical.	It is planned to conduct beyond experiments from the theory papers.





NPR

College of Engineering & Technology

Approved by AICTE, Affiliated to Anna University,
Accredited by NAAC WITH 'A' GRADE | Recognized by UGC under 2 (f)
Natham, Dindigul - 624 401. Web: www.nprcet.org



Alumni	350	2.32/3	How do you rate the courses which are skills related suiting to the industry included in the programs?	It is planned to attend internship, main project and in plant training in industries.
		2.31/3	How do you rate the domain used for designing the experiments in terms of the suitability of the tools to the domain?	Internal Assessment tools like Quiz, GD, etc were conducted.
		2.30/3	How do you rate the experiments in term of their relevance to the real life application?	Industrial visit, Industry internship is executed to have better understand in subject.
Employer	12	2.35/3	How do you the design of the curriculum on developing the employability?	We conduct bridge course and enhance student's communication and aptitude skills by placement cell.
		2.35/3	The design of curriculum on nurturing the entrepreneurship?	EDC cell has conducted more programs to make the students to the future demand through the Entrepreneurship.



Dr. J.SUNDARARAJAN,
B.E., M.Tech., Ph.D.,
Principal
N.P.R. College of Engineering & Technology
Natham, Dindigul (Dt) - 624 401.