



CRITERION 1 - CURRICULAR ASPECTS

KEY INDICATOR 1.4. FEEDBACK SYSTEM

Metric No 1.4.1: Institution obtains feedback on the syllabus and its transaction at the Institution from the following stakeholders

1) Students 2) Faculty 3) Employers 4) Alumni

S.No	Content	Page No.
1	Student Feedback on Curriculum	
	Feedback Questionnaire	03-05
	Unfilled Forms	06-09
	Filled Forms	10-13
	Feedback Analysis Report	14-19
2	Faculty Feedback on Curriculum	
	Feedback Questionnaire	20-21
	Unfilled Forms	22-24
	Filled Forms	25-27
	Feedback Analysis Report	38-32
3	Employers Feedback on Curriculum	
	Feedback Questionnaire	33-34
	Unfilled Forms	35-38
	Filled Forms	39-42
	Feedback Analysis Report	43-47
4	Alumni Feedback on Curriculum	
	Feedback Questionnaire	48-49
	Unfilled Forms	50-52
	Filled Forms	53-55
	Feedback Analysis Report	56-60
5	Action Taken Report	61-63




Dr. J.SUNDARARAJAN,
B.E., M.Tech., Ph.D.,
Principal
M.P.R. College of Engineering & Technology
Natham, Dindigul (Dt) - 624 401.



NPR



College of Engineering & Technology

Accredited by NAAC with 'A' Grade | Recognized by UGC under 2 (f)



Principal : 73734 44449 | Office : 89735 55559

TO WHOMEVER IT MAY CONCERN

This is certify that NPR College of Engineering & Technology has adopted a Feedback System through online for review of curriculum and takes suggestions from stakeholders like students, faculties, employers, alumni for each programme and it will improve to fine-tune the teaching learning process and the curriculum through value added courses, inculcating content beyond syllabus in theory and lab courses.



Dr. J.SUNDARARAJAN,
B.E., M.Tech., Ph.D.,
Principal

N.P.R. College of Engineering & Technology
Natham, Dindigul (Dt) - 624 401.



NPR Nagar, Natham, Dindigul - 624 401, Tamil Nadu, India.
Ph : 04544 - 246 501, 502 | Admin. : 73734 44441, 8973444441
Web : www.nprcolleges.org | E-mail : nprgi@nprcolleges.org

www.nprcet.org



NPR

College of Engineering & Technology

Approved by AICTE, Affiliated to Anna University,
Accredited by NAAC WITH 'A' GRADE | Recognized by UGC under 2 (f)
Natham, Dindigul - 624 401. Web: www.nprcet.org



STUDENTS FEEDBACK QUESTIONNAIRE



NPR

College of Engineering & Technology

Approved by AICTE, Affiliated to Anna University,
Accredited by NAAC WITH 'A' GRADE | Recognized by UGC under 2 (f)
Natham, Dindigul - 624 401. Web: www.nprcet.org



Students Feedback on Curriculum Questionnaire

S.No	Questions
1	How do you rate the sequence of the Courses that you have studied are in sequence to what you have studied in the previous semester?
2	How do you rate the syllabus of the courses that you have studied in relation to the competencies expected out of the course?
3	How do you rate the relevance of the units in Syllabus relevant to the course?
4	How do you rate the sequence of the units in the course?
5	How do you rate the allocation of the credits to the courses?
6	How do you rate the distribution of the contact hours among the course components (L-T- P)?
7	How do you rate the offering of the electives in terms of their relevance to the specialization streams?
8	How do you rate the electives offered in relation to the Technological advancements?
9	How do you rate the relevance of the Text Books and reference books by their International recognition to the Courses?
10	Rate the Size of syllabus in terms of the load on the student
11	Rate the courses in terms of extra learning or self-learning considering the design of the courses
12	Rate the courses in terms of sequence of offering considering whether the preceding courses have been covered
13	How do you Rate the loading of the courses in a semester?
14	How do you rate the evaluation scheme designed for each of the course?
15	How do you rate the objectives stated for each of the course?
16	How do you rate competencies expected out of the course?
17	How do you rate the composition of the courses in terms of Basic science, Engineering Science, Humanities, Discipline core, discipline elective, open elective, project etc.?
18	How do you rate the experiments in relation to the real life Applications?





NPR

College of Engineering & Technology

Approved by AICTE, Affiliated to Anna University,
Accredited by NAAC WITH 'A' GRADE | Recognized by UGC under 2 (f)
Natham, Dindigul - 624 401. Web: www.nprcet.org



19	How do you rate the domain used for designing the experiments for the LAB components?
20	How do you rate the courses having LAB components?



Dr. J.SUNDARARAJAN,

B.E., M.Tech., Ph.D.,

Principal

N.P.R. College of Engineering & Technology

Natham, Dindigul (Dt) - 624 401.



NPR
College of Engineering & Technology
Approved by AICTE, Affiliated to Anna University,
Accredited by NAAC WITH 'A' GRADE | Recognized by UGC under 2 (f)
Natham, Dindigul - 624 401. Web: www.nprcet.org



STUDENTS FEEDBACK

UNFILLED FORMS

STUDENTS FEEDBACK ON CURRICULUM

Name *	<input type="text" value="Name"/>
Degree: *	----Select Degree---- 
Program: *	----Select Program---- 

STUDENTS FEEDBACK ON CURRICULUM

1	How do you rate the sequence of the Courses that you have studied are in sequence to what you have studied in the previous semester?	<input type="radio"/> Excellent <input type="radio"/> Very Good <input type="radio"/> Good <input type="radio"/> Fair <input type="radio"/> Poor
2	How do you rate the syllabus of the courses that you have studied in relation to the competencies expected out of the course?	<input type="radio"/> Excellent <input type="radio"/> Very Good <input type="radio"/> Good <input type="radio"/> Fair <input type="radio"/> Poor
3	How do you rate the relevance of the units in Syllabus relevant to the course?	<input type="radio"/> Excellent <input type="radio"/> Very Good <input type="radio"/> Good <input type="radio"/> Fair <input type="radio"/> Poor
4	How do you rate the sequence of the units in the course?	<input type="radio"/> Excellent <input type="radio"/> Very Good <input type="radio"/> Good <input type="radio"/> Fair <input type="radio"/> Poor
5	How do you rate the allocation of the credits to the courses?	<input type="radio"/> Excellent <input type="radio"/> Very Good <input type="radio"/> Good <input type="radio"/> Fair <input type="radio"/> Poor
6	How do you rate the distribution of the contact hours among the course components (L-T-P)?	<input type="radio"/> Excellent <input type="radio"/> Very Good <input type="radio"/> Good <input type="radio"/> Fair <input type="radio"/> Poor
7	How do you rate the offering of the electives in terms of their relevance to the specialization streams?	<input type="radio"/> Excellent <input type="radio"/> Very Good <input type="radio"/> Good <input type="radio"/> Fair <input type="radio"/> Poor
8	How do you rate the electives offered in relation to the Technological advancements?	<input type="radio"/> Excellent <input type="radio"/> Very Good <input type="radio"/> Good <input type="radio"/> Fair <input type="radio"/> Poor



9	How do you rate the relevance of the Text Books and reference books by their International recognition to the Courses?	<input type="radio"/> Excellent <input type="radio"/> Very Good <input type="radio"/> Good <input type="radio"/> Fair <input type="radio"/> Poor
10	Rate the Size of syllabus in terms of the load on the student	<input type="radio"/> Excellent <input type="radio"/> Very Good <input type="radio"/> Good <input type="radio"/> Fair <input type="radio"/> Poor
11	Rate the courses in terms of extra learning or self learning considering the design of the courses	<input type="radio"/> Excellent <input type="radio"/> Very Good <input type="radio"/> Good <input type="radio"/> Fair <input type="radio"/> Poor
12	Rate the courses in terms of sequence of offering considering whether the preceding courses have been covered	<input type="radio"/> Excellent <input type="radio"/> Very Good <input type="radio"/> Good <input type="radio"/> Fair <input type="radio"/> Poor
13	How do you Rate the loading of the courses in a semester?	<input type="radio"/> Excellent <input type="radio"/> Very Good <input type="radio"/> Good <input type="radio"/> Fair <input type="radio"/> Poor
14	How do you rate the evaluation scheme designed for each of the course?	<input type="radio"/> Excellent <input type="radio"/> Very Good <input type="radio"/> Good <input type="radio"/> Fair <input type="radio"/> Poor
15	How do you rate the objectives stated for each of the course?	<input type="radio"/> Excellent <input type="radio"/> Very Good <input type="radio"/> Good <input type="radio"/> Fair <input type="radio"/> Poor
16	How do you rate competencies expected out of the course?	<input type="radio"/> Excellent <input type="radio"/> Very Good <input type="radio"/> Good <input type="radio"/> Fair <input type="radio"/> Poor
17	How do you rate the composition of the courses in terms of Basic science, Engineering science, Humanities, Discipline core, discipline elective, open elective, project etc.?	<input type="radio"/> Excellent <input type="radio"/> Very Good <input type="radio"/> Good <input type="radio"/> Fair <input type="radio"/> Poor
18	How do you rate the experiments in relation to the real life Applications?	<input type="radio"/> Excellent <input type="radio"/> Very Good <input type="radio"/> Good <input type="radio"/> Fair <input type="radio"/> Poor
19	How do you rate the domain used for designing the experiments for the LAB components?	<input type="radio"/> Excellent <input type="radio"/> Very Good <input type="radio"/> Good <input type="radio"/> Fair <input type="radio"/> Poor
20	How do you rate the courses having LAB components?	<input type="radio"/> Excellent <input type="radio"/> Very Good <input type="radio"/> Good <input type="radio"/> Fair <input type="radio"/> Poor



Any Other Comments:

Submit

© powered by kredo systems V1.0.0.1 (<http://kredosystems.com/>)

KREDO

Dr. J.SUNDARARAJAN,

B.E., M.Tech., Ph.D.,

Principal

M.P.R. College of Engineering & Technology

Natham, Dindigul (Dt) - 624 401.





NPR
College of Engineering & Technology
Approved by AICTE, Affiliated to Anna University,
Accredited by NAAC WITH 'A' GRADE | Recognized by UGC under 2 (f)
Natham, Dindigul - 624 401. Web: www.nprcet.org



STUDENTS FEEDBACK FILLED FORMS

STUDENTS FEEDBACK ON CURRICULUM

Name *	HARINI S
Degree: *	BACHELOR OF ENGINEERING ▼
Program: *	CIVIL ENGINEERING ▼

STUDENTS FEEDBACK ON CURRICULUM

1	How do you rate the sequence of the Courses that you have studied are in sequence to what you have studied in the previous semester?	<input checked="" type="radio"/> Excellent <input type="radio"/> Very Good <input type="radio"/> Good <input type="radio"/> Fair <input type="radio"/> Poor
2	How do you rate the syllabus of the courses that you have studied in relation to the competencies expected out of the course?	<input checked="" type="radio"/> Excellent <input type="radio"/> Very Good <input type="radio"/> Good <input type="radio"/> Fair <input type="radio"/> Poor
3	How do you rate the relevance of the units in Syllabus relevant to the course?	<input checked="" type="radio"/> Excellent <input type="radio"/> Very Good <input type="radio"/> Good <input type="radio"/> Fair <input type="radio"/> Poor
4	How do you rate the sequence of the units in the course?	<input checked="" type="radio"/> Excellent <input type="radio"/> Very Good <input type="radio"/> Good <input type="radio"/> Fair <input type="radio"/> Poor
5	How do you rate the allocation of the credits to the courses?	<input type="radio"/> Excellent <input checked="" type="radio"/> Very Good <input type="radio"/> Good <input type="radio"/> Fair <input type="radio"/> Poor
6	How do you rate the distribution of the contact hours among the course components (L-T-P)?	<input checked="" type="radio"/> Excellent <input type="radio"/> Very Good <input type="radio"/> Good <input type="radio"/> Fair <input type="radio"/> Poor
7	How do you rate the offering of the electives in terms of their relevance to the specialization streams?	<input type="radio"/> Excellent <input checked="" type="radio"/> Very Good <input type="radio"/> Good <input type="radio"/> Fair <input type="radio"/> Poor
8	How do you rate the electives offered in relation to the Technological advancements?	<input checked="" type="radio"/> Excellent <input type="radio"/> Very Good <input type="radio"/> Good <input type="radio"/> Fair <input type="radio"/> Poor



- 9 How do you rate the relevance of the Text Books and reference books by their international recognition to the Courses? ☒ Excellent ☐ Very Good ☐ Good ☐ Fair ☐ Poor
- 10 Rate the Size of syllabus in terms of the load on the student ☒ Excellent ☐ Very Good ☐ Good ☐ Fair ☐ Poor
- 11 Rate the courses in terms of extra learning or self-learning considering the design of the courses ☐ Excellent ☐ Very Good ☒ Good ☐ Fair ☐ Poor
- 12 Rate the courses in terms of sequence offering considering whether the preceding courses have been covered ☒ Excellent ☐ Very Good ☐ Good ☐ Fair ☐ Poor
- 13 How do you Rate the loading of the courses in a semester? ☒ Excellent ☐ Very Good ☐ Good ☐ Fair ☐ Poor
- 14 How do you rate the evaluation scheme designed for each of the course? ☐ Excellent ☒ Very Good ☐ Good ☐ Fair ☐ Poor
- 15 How do you rate the objectives stated for each of the course? ☒ Excellent ☐ Very Good ☐ Good ☐ Fair ☐ Poor
- 16 How do you rate competencies expected out of the course? ☐ Excellent ☒ Very Good ☐ Good ☐ Fair ☐ Poor
- 17 How do you rate the composition of the courses in terms of Basic science, Engineering science, Humanities, Discipline core, discipline elective, open elective, project etc.? ☒ Excellent ☐ Very Good ☐ Good ☐ Fair ☐ Poor
- 18 How do you rate the experiments in relation to the real-life Applications? ☐ Excellent ☐ Very Good ☒ Good ☐ Fair ☐ Poor
- 19 How do you rate the domain used for designing the experiments for the LAB components? ☐ Excellent ☐ Very Good ☒ Good ☐ Fair ☐ Poor
- 20 How do you rate the courses having LAB components? ☐ Excellent ☒ Very Good ☐ Good ☐ Fair ☐ Poor



Any Other Comments:

Submit

© powered by kredo systems V1.0.0.1 (<http://kredosystems.com/>)

KREDO

Dr. J.SUNDARARAJAN,

B.E., M.Tech., Ph.D.,

Principal

M.P.R. College of Engineering & Technology

Natham, Dindigul (Dt) - 624 401.





NPR

College of Engineering & Technology

Approved by AICTE, Affiliated to Anna University,
Accredited by NAAC WITH 'A' GRADE | Recognized by UGC under 2 (f)
Natham, Dindigul - 624 401. Web: www.nprcet.org



STUDENTS FEEDBACK ANALYSIS REPORT



Students Feedback on Curriculum Info – Feedback Analysis Report

Academic Year: 2022-2023

Report Date: 15/02/2023

From: 09/01/2023 To: 10/02/2023

S.No	Question's	Excellent	Very Good	Good	Fair	Poor	Total Weightage	Percentage	3-Scale Weightage
1	How do you rate the sequence of the Courses that you have studied are in sequence to what you have studied in the previous semester?	390	229	118	55	38	3368	81.16	2.43
2	How do you rate the syllabus of the courses that you have studied in relation to the competencies expected out of the course?	400	220	135	52	23	3412	82.22	2.47
3	How do you rate the relevance of the units in Syllabus relevant to the course?	385	220	160	36	29	3386	81.59	2.45
4	How do you rate the sequence of the units in the course?	378	250	140	48	14	3420	82.41	2.47
5	How do you rate the allocation of the credits to the courses?	420	220	135	40	15	3480	83.86	2.52
6	How do you rate the distribution of the contact hours among the course components (L-T-P)?	370	220	160	55	25	3345	80.60	2.42
7	How do you rate the offering of the electives in terms of their relevance to the specialization	380	190	180	64	16	3344	80.58	2.42





	streams?								
8	How do you rate the electives offered in relation to the Technological advancements?	400	180	183	47	20	3383	81.52	2.45
9	How do you rate the relevance of the Text Books and reference books by their International recognition to the Courses?	370	230	165	45	20	3375	81.33	2.44
10	Rate the Size of syllabus in terms of the load on the student	370	175	200	55	30	3290	79.28	2.38
11	Rate the courses in terms of extra learning or self learning considering the design of the courses	270	214	230	89	27	3101	74.72	2.24
12	Rate the courses in terms of sequence of offering considering whether the preceding courses have been covered	365	220	140	65	40	3295	79.40	2.38
13	How do you Rate the loading of the courses in a semester?	426	203	130	41	30	3444	82.99	2.49
14	How do you rate the evaluation scheme designed for each of the course?	350	219	185	41	35	3298	79.47	2.38



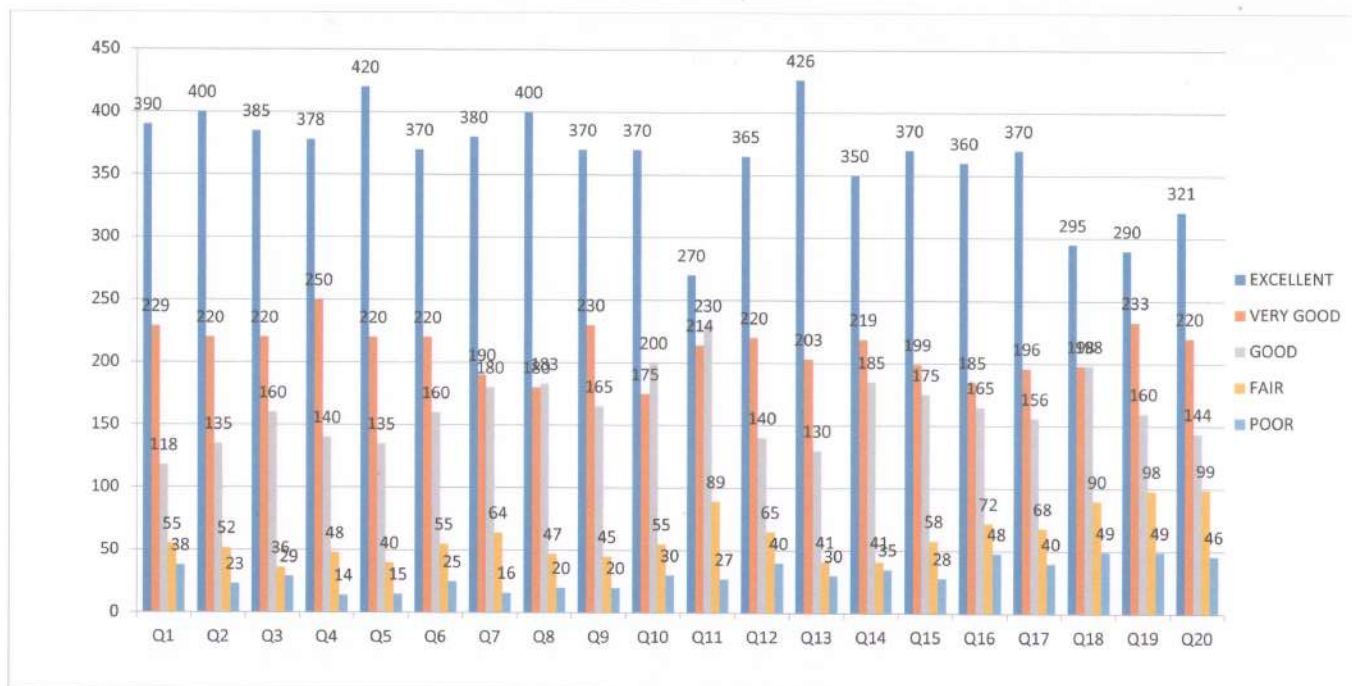


15	How do you rate the objectives stated for each of the course?	370	199	175	58	28	3315	79.88	2.40
16	How do you rate competencies expected out of the course?	360	185	165	72	48	3227	77.76	2.33
17	How do you rate the composition of the courses in terms of Basic science, Engineering science, Humanities, Discipline core, discipline elective, open elective, project etc.?	370	196	156	68	40	3278	78.99	2.37
18	How do you rate the experiments in relation to the real life Applications?	295	198	198	90	49	3090	74.46	2.23
19	How do you rate the domain used for designing the experiments for the LAB components?	290	233	160	98	49	3107	74.87	2.25
20	How do you rate the courses having LAB components?	321	220	144	99	46	3161	76.17	2.29
AVERAGE SCORE							3306	79.66	2.39



Dr. J.SUNDARARAJAN,
B.E., M.Tech., Ph.D.,
Principal
N.P.R. College of Engineering & Technology
Natham, Dindigul (Dt) - 624 401.

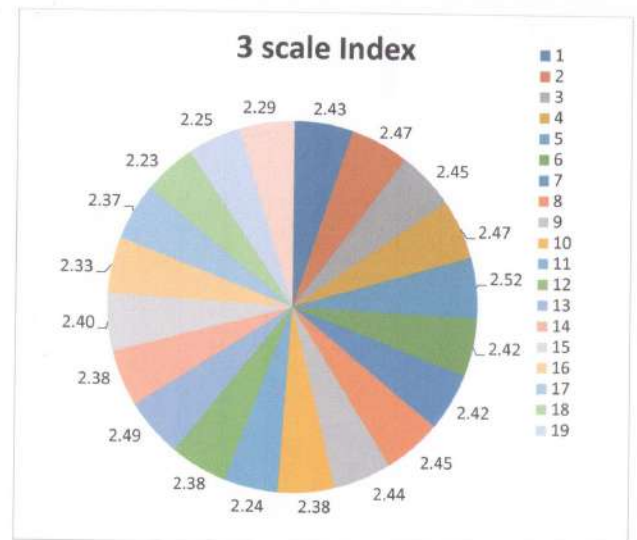
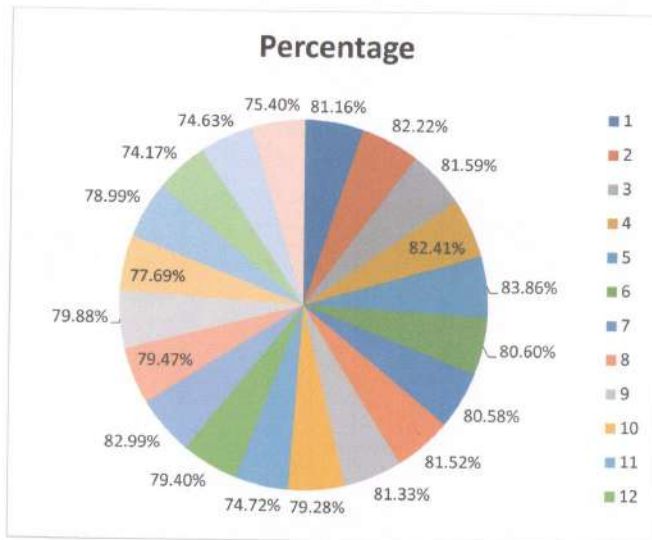
STUDENTS FEEDBACK



Students Feedback from 09/01/2023 to 10/02/2023



STUDENTS FEEDBACK



Students Feedback from 09/01/2023 to 10/02/2023





NPR

College of Engineering & Technology

Approved by AICTE, Affiliated to Anna University,
Accredited by NAAC WITH 'A' GRADE | Recognized by UGC under 2 (f)
Natham, Dindigul - 624 401. Web: www.nprcet.org



FACULTY FEEDBACK QUESTIONNAIRE



NPR

College of Engineering & Technology

Approved by AICTE, Affiliated to Anna University,
Accredited by NAAC WITH 'A' GRADE | Recognized by UGC under 2 (f)
Natham, Dindigul - 624 401. Web: www.nprcet.org



Faculty Feedback on Curriculum Questionnaire

S.No	Questions
1	The Learning Objectives are clear and appropriate to the program
2	The curriculum and Syllabus are well organized and suitable to the program.
3	The text books/ reference books are well suited to the courses.
4	The system followed by the university for the design and development of curriculum is effective
5	Provision to update curriculum time to time.
6	How do you rate the distribution of contact hours among the course components?
7	The curriculum has a good balance between theory and practical.
8	How do rate the electives offered in your program for the technological advancements?



Dr. J.SUNDARARAJAN,

B.E., M.Tech., Ph.D.,

Principal

N.P.R. College of Engineering & Technology

Natham, Dindigul (Dt) - 624 401.



NPR
College of Engineering & Technology
Approved by AICTE, Affiliated to Anna University,
Accredited by NAAC WITH 'A' GRADE | Recognized by UGC under 2 (f)
Natham, Dindigul - 624 401. Web: www.nprcet.org



FACULTY FEEDBACK

UNFILLED FORMS

FACULTY FEEDBACK ON CURRICULUM

Name *	<input type="text" value="Name"/>
Degree: *	----Select Degree---- 
Program: *	----Select Program---- 

FACULTY FEEDBACK ON CURRICULUM

1	The Learning Objectives are clear and appropriate to the program	<input type="radio"/> Excellent <input type="radio"/> Very Good <input type="radio"/> Good <input type="radio"/> Fair <input type="radio"/> Poor
2	The curriculum and Syllabus are well organized and suitable to the program.	<input type="radio"/> Excellent <input type="radio"/> Very Good <input type="radio"/> Good <input type="radio"/> Fair <input type="radio"/> Poor
3	The text books/ reference books are well suited to the courses.	<input type="radio"/> Excellent <input type="radio"/> Very Good <input type="radio"/> Good <input type="radio"/> Fair <input type="radio"/> Poor
4	The system followed by the university for the design and development of curriculum is effective	<input type="radio"/> Excellent <input type="radio"/> Very Good <input type="radio"/> Good <input type="radio"/> Fair <input type="radio"/> Poor
5	Provision to update curriculum time to time.	<input type="radio"/> Excellent <input type="radio"/> Very Good <input type="radio"/> Good <input type="radio"/> Fair <input type="radio"/> Poor
6	How do you rate the distribution of contact hours among the course components?	<input type="radio"/> Excellent <input type="radio"/> Very Good <input type="radio"/> Good <input type="radio"/> Fair <input type="radio"/> Poor
7	The curriculum has a good balance between theory and practical.	<input type="radio"/> Excellent <input type="radio"/> Very Good <input type="radio"/> Good <input type="radio"/> Fair <input type="radio"/> Poor
8	How do rate the electives offered in your program for the technological advancements?	<input type="radio"/> Excellent <input type="radio"/> Very Good <input type="radio"/> Good <input type="radio"/> Fair <input type="radio"/> Poor



Any Other Comments:

Submit

© powered by kredo systems V1.0.0.1 (<http://kredosystems.com/>)
KREDOS


Dr. J.SUNDARARAJAN,
B.E., M.Tech., Ph.D.,
Principal
M.P.R. College of Engineering & Technology
Natham, Dindigur (Dt) - 024 401.





NPR

College of Engineering & Technology

Approved by AICTE, Affiliated to Anna University,
Accredited by NAAC WITH 'A' GRADE | Recognized by UGC under 2 (f)
Natham, Dindigul - 624 401. Web: www.nprcet.org



FACULTY FEEDBACK FILLED FORMS

FACULTY FEEDBACK ON CURRICULUM

Name *	DR. P.KANIRAJAN
Degree: *	BACHELOR OF ENGINEERING ▼
Program: *	ELECTRICAL AND ELECTRONICS ENGINEERING ▼

FACULTY FEEDBACK ON CURRICULUM

- | | | |
|---|---|--|
| 1 | The Learning Objectives are clear and appropriate to the program | <input checked="" type="radio"/> Excellent <input type="radio"/> Very Good <input type="radio"/> Good
<input type="radio"/> Fair <input type="radio"/> Poor |
| 2 | The curriculum and Syllabus are well organized and suitable to the program. | <input checked="" type="radio"/> Excellent <input type="radio"/> Very Good <input type="radio"/> Good
<input type="radio"/> Fair <input type="radio"/> Poor |
| 3 | The text books/ reference books are well suited to the courses. | <input checked="" type="radio"/> Excellent <input type="radio"/> Very Good <input type="radio"/> Good
<input type="radio"/> Fair <input type="radio"/> Poor |
| 4 | The system followed by the university for the design and development of curriculum is effective | <input checked="" type="radio"/> Excellent <input type="radio"/> Very Good <input type="radio"/> Good
<input type="radio"/> Fair <input type="radio"/> Poor |
| 5 | Provision to update curriculum time to time. | <input type="radio"/> Excellent <input checked="" type="radio"/> Very Good <input type="radio"/> Good
<input type="radio"/> Fair <input type="radio"/> Poor |
| 6 | How do you rate the distribution of contact hours among the course components? | <input checked="" type="radio"/> Excellent <input type="radio"/> Very Good <input type="radio"/> Good
<input type="radio"/> Fair <input type="radio"/> Poor |
| 7 | The curriculum has a good balance between theory and practical. | <input checked="" type="radio"/> Excellent <input type="radio"/> Very Good <input type="radio"/> Good
<input type="radio"/> Fair <input type="radio"/> Poor |
| 8 | How do rate the electives offered in your program for the technological advancements? | <input checked="" type="radio"/> Excellent <input type="radio"/> Very Good <input type="radio"/> Good
<input type="radio"/> Fair <input type="radio"/> Poor |



Any Other Comments:

Submit

© powered by kredo systems V1.0.0.1 (<http://kredosystems.com/>)

KREDO


Dr. J.SUNDARARAJAN,

B.E., M.Tech., Ph.D.,

Principal

M.P.R. College of Engineering & Technology

Natham, Dindigur (Dt) - 024 401.





NPR

College of Engineering & Technology

Approved by AICTE, Affiliated to Anna University,
Accredited by NAAC WITH 'A' GRADE | Recognized by UGC under 2 (f)
Natham, Dindigul - 624 401. Web: www.nprcet.org



FACULTY FEEDBACK ANALYSIS REPORT



NPR

College of Engineering & Technology

Approved by AICTE, Affiliated to Anna University,
Accredited by NAAC WITH 'A' GRADE | Recognized by UGC under 2 (f)
Natham, Dindigul - 624 401. Web: www.nprcet.org



Faculty Feedback on Curriculum Info – Feedback Analysis Report

Academic Year: 2022-2023

Report Date: 15/02/2023 From: 9/01/2023 To: 10/02/2023

S.No	Question's	Excellent	Very Good	Good	Fair	Poor	Total Weightage	Percentage	3-Scale Weightage
1	The Learning Objectives are clear and appropriate to the program	64	28	11	0	0	465	90.29	2.71
2	The curriculum and Syllabus are well organized and suitable to the program.	54	39	10	0	0	456	88.54	2.66
3	The text books/ reference books are well suited to the courses.	49	44	10	0	0	451	87.57	2.63
4	The system followed by the university for the design and development of curriculum is effective	35	36	32	0	0	415	80.58	2.42
5	Provision to update curriculum time to time.	32	36	35	0	0	409	79.42	2.38
6	How do you rate the distribution of contact hours among the course components?	47	33	23	0	0	436	84.66	2.54
7	The curriculum has a good balance between theory and practical.	34	31	38	0	0	408	79.22	2.38





NPR

College of Engineering & Technology

Approved by AICTE, Affiliated to Anna University,
Accredited by NAAC WITH 'A' GRADE | Recognized by UGC under 2 (f)
Natham, Dindigul - 624 401. Web: www.nprcet.org



8	How do rate the electives offered in your program for the technological advancements?	34	32	37	0	0	409	79.42	2.38
AVERAGE SCORE							431.13	83.71	2.51


Dr. J.SUNDARARAJAN,

B.E., M.Tech., Ph.D.,

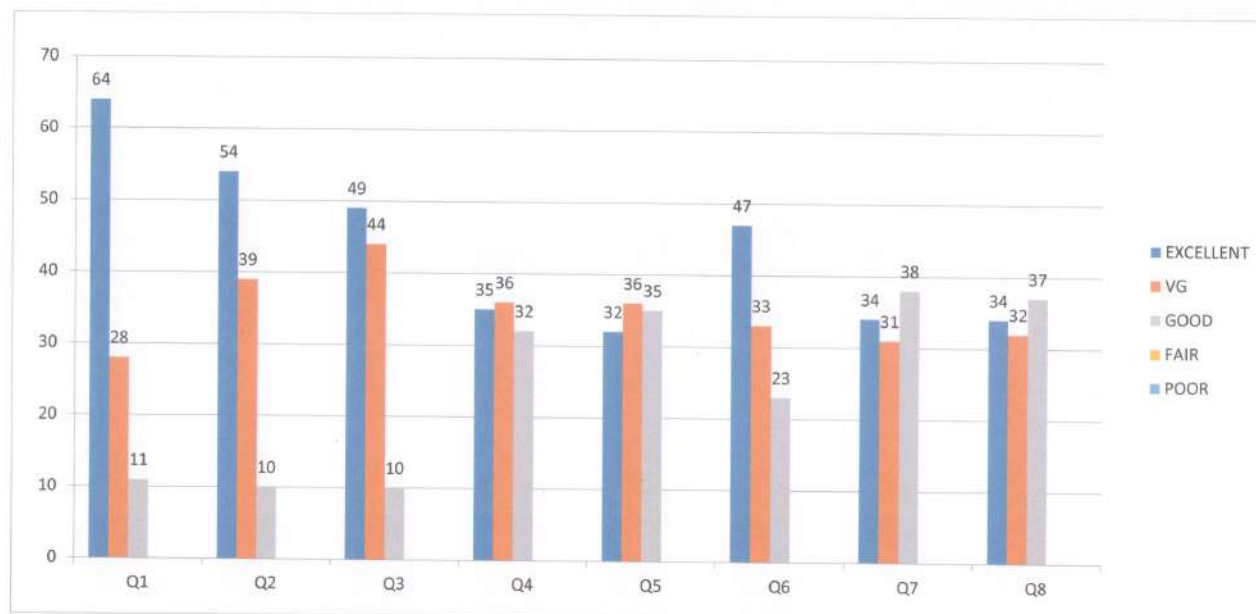
Principal

N.P.R. College of Engineering & Technology

Natham, Dindigul (Dt) - 624 401.



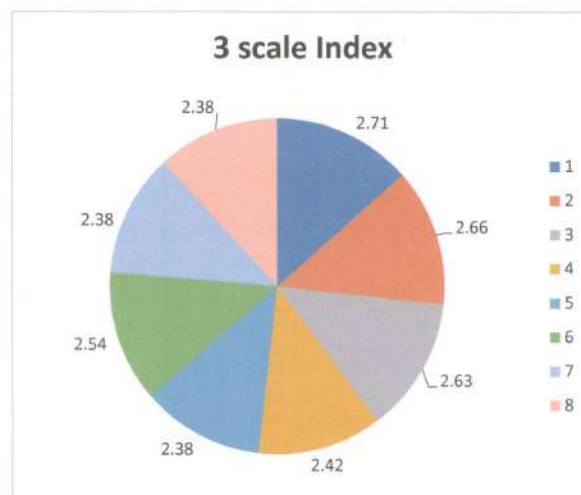
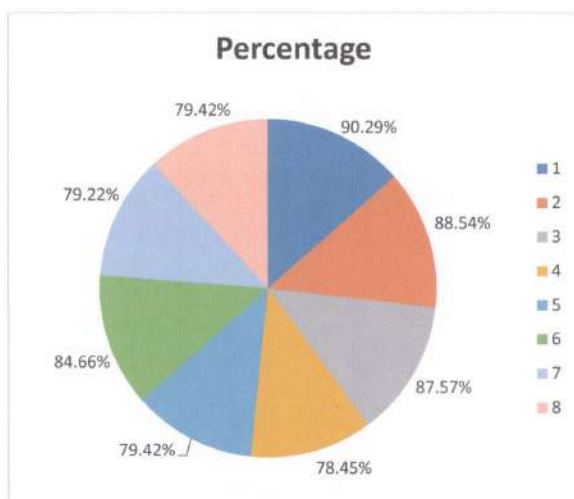
FACULTY FEEDBACK



Faculty Feedback From 9/01/2023 To 10/02/2023



FACULTY FEEDBACK



Faculty Feedback From 9/01/2023 To 10/02/2023





NPR

College of Engineering & Technology

Approved by AICTE, Affiliated to Anna University,
Accredited by NAAC WITH 'A' GRADE | Recognized by UGC under 2 (f)
Natham, Dindigul - 624 401. Web: www.nprcet.org



EMPLOYERS FEEDBACK QUESTIONNAIRE



Employers Feedback on Curriculum Questionnaire

S.No	Questions
1	How do you rate the syllabus relevant to the real life situations?
2	How do you rate the learning values (skills, concepts, knowledge & analytical abilities) present in the syllabus?
3	How do you rate the relevance for implementation in projects?
4	How do you rate the gap filling ability of the available syllabus to bridge academics and Industry?
5	How do you rate the design of the curriculum on developing the employability?
6	How do you rate the design of curriculum on nurturing the entrepreneurship?
7	How do you rate the syllabus updation regarding advanced topics?
8	How do you rate the available teaching tools to enhance the understanding of subjects?




Dr. J. SUNDARARAJAN,
B.E., M.Tech., Ph.D.,
Principal

N.P.R. College of Engineering & Technology
Natham, Dindigul (Or) - 624 401.



NPR

College of Engineering & Technology

Approved by AICTE, Affiliated to Anna University,
Accredited by NAAC WITH 'A' GRADE | Recognized by UGC under 2 (f)
Natham, Dindigul - 624 401. Web: www.nprcet.org



EMPLOYERS FEEDBACK UNFILLED FORMS

EMPLOYER FEEDBACK

Name of the Employee: *

Degree: *



Program: *



Name of the Organization: *

Name of the Officer and Designation: *

FEEDBACK QUESTIONS



-
- | | | |
|---|--|---|
| 1 | How do you rate the syllabus relevant to the real life situations? | <input type="radio"/> Excellent <input type="radio"/> Very Good <input type="radio"/> Good <input type="radio"/> Fair
<input type="radio"/> Poor |
|---|--|---|
-
- | | | |
|---|---|---|
| 2 | How do you rate the learning values (skills, concepts, knowledge & analytical abilities) present in the syllabus? | <input type="radio"/> Excellent <input type="radio"/> Very Good <input type="radio"/> Good <input type="radio"/> Fair
<input type="radio"/> Poor |
|---|---|---|
-
- | | | |
|---|---|---|
| 3 | How do you rate the relevance for implementation in projects? | <input type="radio"/> Excellent <input type="radio"/> Very Good <input type="radio"/> Good <input type="radio"/> Fair
<input type="radio"/> Poor |
|---|---|---|
-
- | | | |
|---|---|---|
| 4 | How do you rate the gap filling ability of the available syllabus to bridge academics and Industry? | <input type="radio"/> Excellent <input type="radio"/> Very Good <input type="radio"/> Good <input type="radio"/> Fair
<input type="radio"/> Poor |
|---|---|---|
-
- | | | |
|---|---|---|
| 5 | How do you rate the design of the curriculum on developing the employability? | <input type="radio"/> Excellent <input type="radio"/> Very Good <input type="radio"/> Good <input type="radio"/> Fair
<input type="radio"/> Poor |
|---|---|---|
-
- | | | |
|---|---|---|
| 6 | How do you rate the design of curriculum on nurturing the entrepreneurship? | <input type="radio"/> Excellent <input type="radio"/> Very Good <input type="radio"/> Good <input type="radio"/> Fair
<input type="radio"/> Poor |
|---|---|---|
-
- | | | |
|---|--|---|
| 7 | How do you rate the syllabus updation regarding advanced topics? | <input type="radio"/> Excellent <input type="radio"/> Very Good <input type="radio"/> Good <input type="radio"/> Fair
<input type="radio"/> Poor |
|---|--|---|
-
- | | | |
|---|--|---|
| 8 | How do you rate the available teaching tools to enhance the understanding of subjects? | <input type="radio"/> Excellent <input type="radio"/> Very Good <input type="radio"/> Good <input type="radio"/> Fair
<input type="radio"/> Poor |
|---|--|---|
-



Would you like to consider our students for future employment:

☐ Yes ☐ No

What are your advices for further improvements on our candidates?

Remarks

Submit

© powered by kredo systems V1.0.0.1 (<http://kredosystems.com/>)

KREDOS



Dr. J.SUNDARARAJAN,
B.E., M.Tech., Ph.D.,
Principal
N.P.R. College of Engineering & Technology
Natham, Dindigur (Dt) - 624 401.



NPR
College of Engineering & Technology
Approved by AICTE, Affiliated to Anna University,
Accredited by NAAC WITH 'A' GRADE | Recognized by UGC under 2 (f)
Natham, Dindigul - 624 401. Web: www.nprcet.org



EMPLOYERS FEEDBACK FILLED FORMS

EMPLOYER FEEDBACK

Name of the Employee: *

SIVA PRIYA R

Degree: *

BACHELOR OF ENGINEERING

Program: *

COMPUTER SCIENCE AND ENGINEERING

Name of the Organization: *

AD MEDIA , COIMBATORE

Name of the Officer and Designation: *

SHANTHI.C , CEO

FEEDBACK QUESTIONS



- | | | |
|---|---|--|
| 1 | How do you rate the syllabus relevant to the real life situations? | <input checked="" type="radio"/> Excellent <input type="radio"/> Very Good <input type="radio"/> Good <input type="radio"/> Fair
<input type="radio"/> Poor |
| 2 | How do you rate the learning values (skills, concepts, knowledge & analytical abilities) present in the syllabus? | <input type="radio"/> Excellent <input checked="" type="radio"/> Very Good <input type="radio"/> Good <input type="radio"/> Fair
<input type="radio"/> Poor |
| 3 | How do you rate the relevance for implementation in projects? | <input type="radio"/> Excellent <input checked="" type="radio"/> Very Good <input type="radio"/> Good <input type="radio"/> Fair
<input type="radio"/> Poor |
| 4 | How do you rate the gap filling ability of the available syllabus to bridge academics and Industry? | <input type="radio"/> Excellent <input checked="" type="radio"/> Very Good <input type="radio"/> Good <input type="radio"/> Fair
<input type="radio"/> Poor |
| 5 | How do you rate the design of the curriculum on developing the employability? | <input checked="" type="radio"/> Excellent <input type="radio"/> Very Good <input type="radio"/> Good <input type="radio"/> Fair
<input type="radio"/> Poor |
| 6 | How do you rate the design of curriculum on nurturing the entrepreneurship? | <input type="radio"/> Excellent <input checked="" type="radio"/> Very Good <input type="radio"/> Good <input type="radio"/> Fair
<input type="radio"/> Poor |
| 7 | How do you rate the syllabus updation regarding advanced topics? | <input checked="" type="radio"/> Excellent <input type="radio"/> Very Good <input type="radio"/> Good <input type="radio"/> Fair
<input type="radio"/> Poor |
| 8 | How do you rate the available teaching tools to enhance the understanding of subjects? | <input type="radio"/> Excellent <input checked="" type="radio"/> Very Good <input type="radio"/> Good <input type="radio"/> Fair
<input type="radio"/> Poor |



Would you like to consider our students for future employment:

☒ Yes ☐ No

What are your advices for further improvements on our candidates?

Remarks

Submit

© powered by kredo systems V1.0.0.1 (<http://kredosystems.com/>)

KREDOS



Dr. J.SUNDARARAJAN,
B.E., M.Tech., Ph.D.,
Principal
N.P.R. College of Engineering & Technology
Natham, Dindigur (Ds) - 624 401.



NPR
College of Engineering & Technology
Approved by AICTE, Affiliated to Anna University,
Accredited by NAAC WITH 'A' GRADE | Recognized by UGC under 2 (f)
Natham, Dindigul - 624 401. Web: www.nprcet.org



EMPLOYERS FEEDBACK ANALYSIS REPORT



NPR

College of Engineering & Technology

Approved by AICTE, Affiliated to Anna University,
Accredited by NAAC WITH 'A' GRADE Recognized by UGC under 2 (f)
Natham, Dindigul - 624 401. Web: www.nprcet.org



Employers Feedback on Curriculum Info – Feedback Analysis Report

Academic Year: 2022-2023 Report Date: 15/02/2023 From: 9/01/2023 To: 10/02/2023

S.No	Question's	Excellent	Very Good	Good	Fair	Poor	Total Weightage	Percentage	3-Scale Weightage
1	How do you rate the syllabus relevant to the real life situations?	12	6	2	0	0	90	90.00	2.70
2	How do you rate the learning values (skills, concepts, knowledge & analytical abilities) present in the syllabus?	10	9	1	0	0	89	89.00	2.67
3	How do you rate the relevance for implementation in projects?	11	9	0	0	0	91	91.00	2.73
4	How do you rate the gap filling ability of the available syllabus to bridge academics and Industry?	10	5	5	0	0	85	85.00	2.55
5	How do you rate the design of the curriculum on developing the employability?	6	7	7	0	0	79	79.00	2.37
6	How do you rate the design of	6	6	8	0	0	78	78.00	2.34





NPR

College of Engineering & Technology

Approved by AICTE, Affiliated to Anna University,

Accredited by NAAC WITH 'A' GRADE | Recognized by UGC under 2 (f)

Natham, Dindigul - 624 401. Web: www.nprcet.org



	curriculum on nurturing the entrepreneurship?								
7	How do you rate the syllabus updation regarding advanced topics?	9	7	4	0	0	85	85.00	2.55
8	How do you rate the available teaching tools to enhance the understanding of subjects?	8	6	6	0	0	82	82.00	2.46
AVERAGE SCORE							209	81.96	2.46

Dr. J.SUNDARARAJAN,

B.E., M.Tech., Ph.D.,

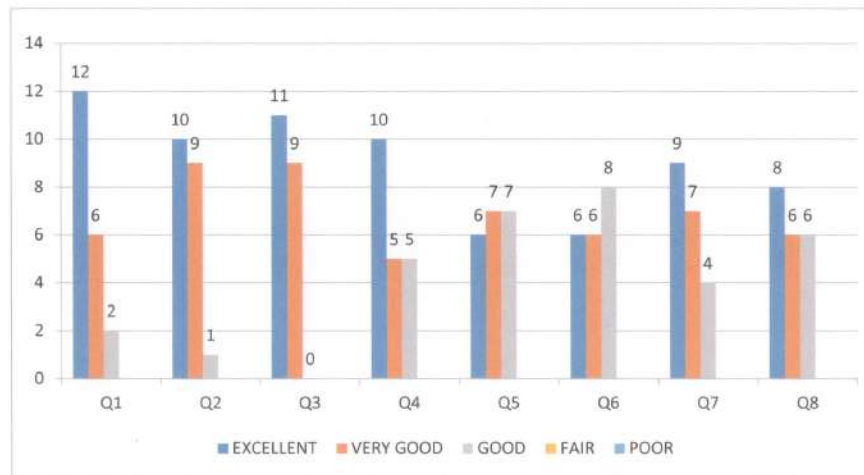
Principal

N.P.R. College of Engineering & Technology

Natham, Dindigul (Dt) - 624 401.



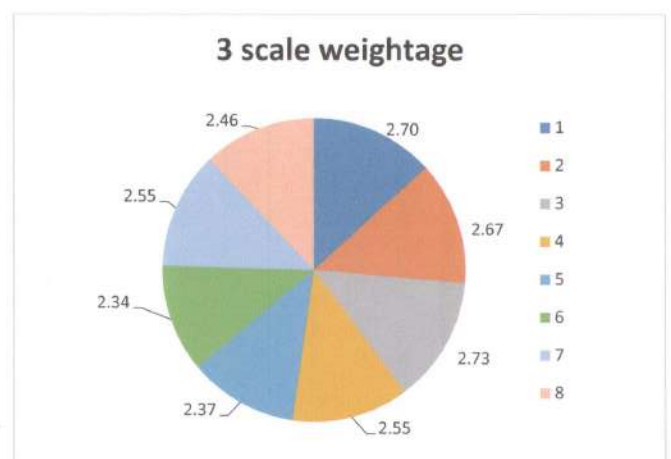
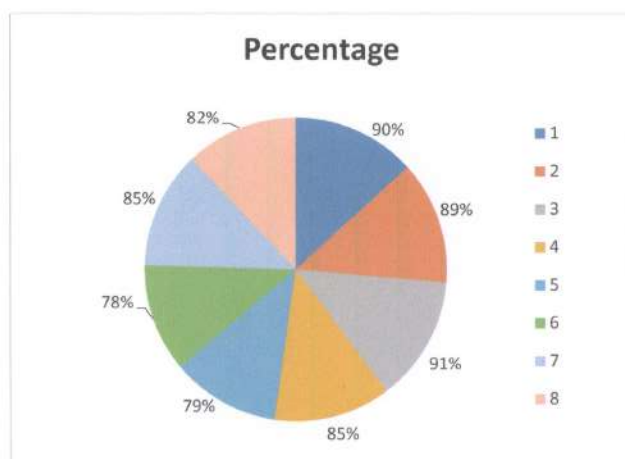
EMPLOYER FEEDBACK



Employer Feedback From 9/01/2023 To 10/02/2023



EMPLOYER FEEDBACK



Employer Feedback From 9/01/2023 To 10/02/2023





NPR

College of Engineering & Technology

Approved by AICTE, Affiliated to Anna University,
Accredited by NAAC WITH 'A' GRADE | Recognized by UGC under 2 (f)
Natham, Dindigul - 624 401. Web: www.nprcet.org



ALUMNI FEEDBACK QUESTIONNAIRE



NPR

College of Engineering & Technology

Approved by AICTE, Affiliated to Anna University,
Accredited by NAAC WITH 'A' GRADE Recognized by UGC under 2 (f)
Natham, Dindigul - 624 401. Web: www.nprcet.org



Alumni Feedback on Curriculum Questionnaire

S.No	Questions
1	How do you rate relevance of the courses in relation to the program?
2	How do you rate the sequence of the courses included into the programs?
3	How do you rate the competencies in relation to the course content?
4	How do rate the sequence of the topics in the units?
5	Rate the offering of the in relation to the specialization streams?
6	How do you rate the offering of the electives in relation to the Technological advancements?
7	How do you rate the courses which are skills related suiting to the Industry included into the programs?
8	How do you rate the domain used for designing the experiments in terms of the suitability of the Tools to the domain?
9	How do you rate the experiments in terms of their relevance to the real life application?
10	How do you rate the courses that you have learnt in relation to your current Job?



Dr. J.SUNDARARAJAN,
B.E., M.Tech., Ph.D.,
Principal
N.P.R. College of Engineering & Technology
Natham, Dindigul (Dt) - 624 401.



NPR

College of Engineering & Technology

Approved by AICTE, Affiliated to Anna University,
Accredited by NAAC WITH 'A' GRADE Recognized by UGC under 2 (f)
Natham, Dindigul - 624 401. Web: www.nprcet.org



ALUMNI FEEDBACK

UNFILLED FORMS

ALUMNI FEEDBACK ON CURRICULUM

Name *

Name

Degree: *

----Select Degree----

Program: *

----Select Program----

ALUMNI FEEDBACK ON CURRICULUM

- | | | |
|---|---|---|
| 1 | How do you rate relevance of the courses in relation to the program? | <input type="radio"/> Excellent <input type="radio"/> Very Good <input type="radio"/> Good
<input type="radio"/> Fair <input type="radio"/> Poor |
| 2 | How do you rate the sequence of the courses included into the programs? | <input type="radio"/> Excellent <input type="radio"/> Very Good <input type="radio"/> Good
<input type="radio"/> Fair <input type="radio"/> Poor |
| 3 | How do you rate the competencies in relation to the course content? | <input type="radio"/> Excellent <input type="radio"/> Very Good <input type="radio"/> Good
<input type="radio"/> Fair <input type="radio"/> Poor |
| 4 | How do rate the sequence of the topics in the units? | <input type="radio"/> Excellent <input type="radio"/> Very Good <input type="radio"/> Good
<input type="radio"/> Fair <input type="radio"/> Poor |
| 5 | Rate the offering of the in relation to the specialization streams? | <input type="radio"/> Excellent <input type="radio"/> Very Good <input type="radio"/> Good
<input type="radio"/> Fair <input type="radio"/> Poor |
| 6 | How do you rate the offering of the electives in relation to the Technological advancements? | <input type="radio"/> Excellent <input type="radio"/> Very Good <input type="radio"/> Good
<input type="radio"/> Fair <input type="radio"/> Poor |
| 7 | How do you rate the courses which are skills related suiting to the Industry included into the programs? | <input type="radio"/> Excellent <input type="radio"/> Very Good <input type="radio"/> Good
<input type="radio"/> Fair <input type="radio"/> Poor |
| 8 | How do you rate the domain used for designing the experiments in terms of the suitability of the tools to the domain? | <input type="radio"/> Excellent <input type="radio"/> Very Good <input type="radio"/> Good
<input type="radio"/> Fair <input type="radio"/> Poor |



9 How do you rate the experiments in terms of their relevance to the real life application?

☐ Excellent ☐ Very Good ☐ Good
☐ Fair ☐ Poor

10 How do you rate the courses that you have learnt in relation to your current Job?

☐ Excellent ☐ Very Good ☐ Good
☐ Fair ☐ Poor

Any Other Comments:

Submit

© powered by kredo systems V1.0.0.1 (<http://kredosystems.com/>)

KREDOS



Dr. J.SUNDARARAJAN,
B.E., M.Tech., Ph.D.,
Principal
N.P.R. College of Engineering & Technology
Natham, Dindigur (Dt) - 624 401.



NPR
College of Engineering & Technology
Approved by AICTE, Affiliated to Anna University,
Accredited by NAAC WITH 'A' GRADE | Recognized by UGC under 2 (f)
Natham, Dindigul - 624 401. Web: www.nprcet.org



ALUMNI FEEDBACK FILLED FORMS

ALUMNI FEEDBACK ON CURRICULUM

Name *

B.B.ARUN KARTHICK

Degree: *

BACHELOR OF ENGINEERING

Program: *

MECHANICAL ENGINEERING

ALUMNI FEEDBACK ON CURRICULUM

- | | | |
|---|---|--|
| 1 | How do you rate relevance of the courses in relation to the program? | <input checked="" type="radio"/> Excellent <input type="radio"/> Very Good <input type="radio"/> Good
<input type="radio"/> Fair <input type="radio"/> Poor |
| 2 | How do you rate the sequence of the courses included into the programs? | <input checked="" type="radio"/> Excellent <input type="radio"/> Very Good <input type="radio"/> Good
<input type="radio"/> Fair <input type="radio"/> Poor |
| 3 | How do you rate the competencies in relation to the course content? | <input checked="" type="radio"/> Excellent <input type="radio"/> Very Good <input type="radio"/> Good
<input type="radio"/> Fair <input type="radio"/> Poor |
| 4 | How do rate the sequence of the topics in the units? | <input checked="" type="radio"/> Excellent <input type="radio"/> Very Good <input type="radio"/> Good
<input type="radio"/> Fair <input type="radio"/> Poor |
| 5 | Rate the offering of the in relation to the specialization streams? | <input type="radio"/> Excellent <input checked="" type="radio"/> Very Good <input type="radio"/> Good
<input type="radio"/> Fair <input type="radio"/> Poor |
| 6 | How do you rate the offering of the electives in relation to the Technological advancements? | <input checked="" type="radio"/> Excellent <input type="radio"/> Very Good <input type="radio"/> Good
<input type="radio"/> Fair <input type="radio"/> Poor |
| 7 | How do you rate the courses which are skills related suiting to the Industry included into the programs? | <input checked="" type="radio"/> Excellent <input type="radio"/> Very Good <input type="radio"/> Good
<input type="radio"/> Fair <input type="radio"/> Poor |
| 8 | How do you rate the domain used for designing the experiments in terms of the suitability of the tools to the domain? | <input type="radio"/> Excellent <input checked="" type="radio"/> Very Good <input type="radio"/> Good
<input type="radio"/> Fair <input type="radio"/> Poor |



9 How do you rate the experiments in terms of their relevance to the real life application?

☐ Excellent ☒ Very Good ☐ Good
☐ Fair ☐ Poor

10 How do you rate the courses that you have learnt in relation to your current job?

☐ Excellent ☒ Very Good ☐ Good
☐ Fair ☐ Poor

Any Other Comments:

Submit

© powered by kredo systems V1.0.0.1 (<http://kredosystems.com/>)

KREDOS

Dr. J.SUNDARARAJAN,
B.E., M.Tech., Ph.D.,

Principal

N.P.R. College of Engineering & Technology
Natham, Dindigur (Dt) - 624 401.





NPR

College of Engineering & Technology

Approved by AICTE, Affiliated to Anna University,
Accredited by NAAC WITH 'A' GRADE | Recognized by UGC under 2 (f)
Natham, Dindigul - 624 401. Web: www.nprcet.org



ALUMNI FEEDBACK ANALYSIS REPORT



NPR

College of Engineering & Technology

Approved by AICTE, Affiliated to Anna University,
Accredited by NAAC WITH 'A' GRADE Recognized by UGC under 2 (f)
Natham, Dindigul - 624 401. Web: www.nprcet.org



Alumni Feedback on Curriculum Info – Feedback Analysis Report

Academic Year: 2022-2023 Report Date:15/02/2023 From:9/01/2023 To:10/02/2023

S.No	Question's	Excellent	Very Good	Good	Fair	Poor	Total Weightage	Percentage	3-Scale Weightage
1	How do you rate relevance of the courses in relation to the program?	270	110	82	8	0	2052	87.32	2.62
2	How do you rate the sequence of the courses included into the programs?	250	130	70	20	0	2020	85.96	2.58
3	How do you rate the competencies in relation to the course content?	245	129	75	21	0	2008	85.45	2.56
4	How do rate the sequence of the topics in the units?	235	125	96	14	0	1991	84.72	2.54
5	Rate the offering of the in relation to the specialization streams?	220	143	85	22	0	1971	83.87	2.52
6	How do you rate the offering of the electives in relation to the Technological advancements?	242	124	87	17	0	2001	85.15	2.55
7	How do you rate the courses which are skills related suiting to the Industry included into the programs?	190	112	123	45	0	1857	79.02	2.37





NPR

College of Engineering & Technology

Approved by AICTE, Affiliated to Anna University,
Accredited by NAAC WITH 'A' GRADE | Recognized by UGC under 2 (f)
Natham, Dindigul - 624 401. Web: www.nprcet.org



8	How do you rate the domain used for designing the experiments in terms of the suitability of the Tools to the domain?	165	130	124	51	0	1819	77.40	2.32
9	How do you rate the experiments in terms of their relevance to the real life application?	187	105	137	41	0	1848	78.64	2.36
10	How do you rate the courses that you have learnt in relation to your current Job?	220	109	101	40	0	1919	81.66	2.45
AVERAGE SCORE							1948.60	82.92	2.49

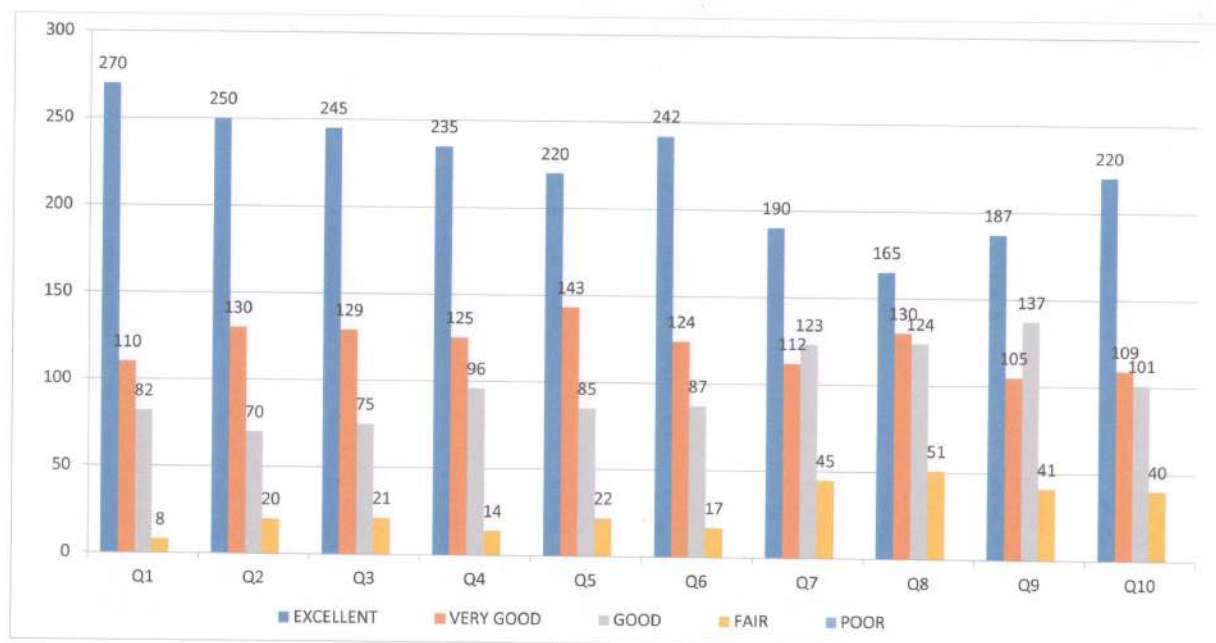
Dr. J.SUNDARARAJAN,
B.E., M.Tech., Ph.D.,

Principal

N.P.R. College of Engineering & Technology
Natham, Dindigul (Dt) - 624 401.



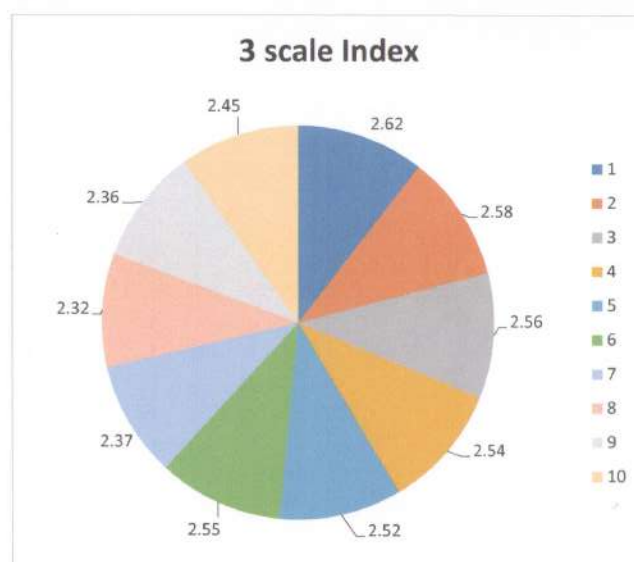
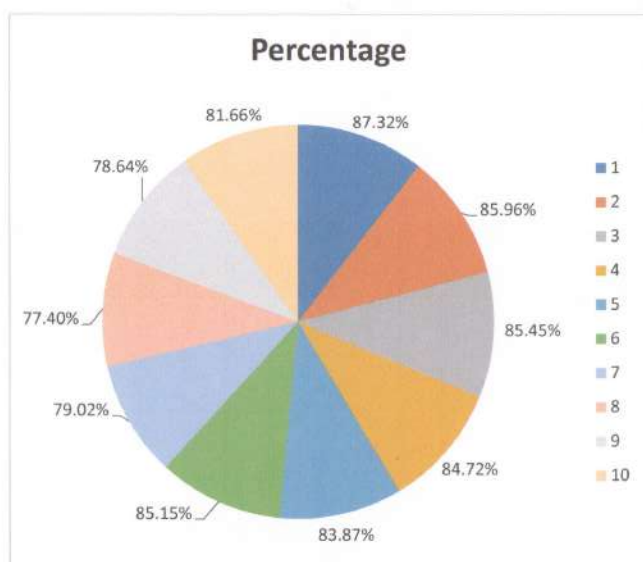
ALUMNI FEEDBACK



Alumni Feedback From 09/01/2023 To 10/02/2023



ALUMNI FEEDBACK



Alumni Feedback From 09/01/2023 To 10/02/2023





NPR

College of Engineering & Technology

Approved by AICTE, Affiliated to Anna University,
Accredited by NAAC WITH 'A' GRADE Recognized by UGC under 2 (f)
Natham, Dindigul - 624 401. Web: www.nprcet.org



ACTION TAKEN REPORT



Action Taken Report for the Analysis of Feedback collected from Students, Faculty, Alumni and Employer

Feedback Collected From	Number of Responses	Threshold	Questionnaires with less threshold	Action Taken
Student	830	2.24/3	Rate the courses in terms of extra learning or self-learning considering the design of the courses?	Students are motivated to attend Add-On courses, Symposium and on design skills.
		2.23/3	How do you rate the experiments in relation to the real-life Applications?	Industrial visit, Industry internship is executed to have better understanding in relevant subjects.
		2.25/3	How do you rate the domain used for designing the experiments for lab components?	More mini projects are planned to give students from upcoming semester.
Faculty	103	2.38/3	Provision to update curriculum time to time.	It is planned to analyses the curriculum gap and to include the content beyond syllabus as per the industrial need.
		2.38/3	How do rate the electives offered in your program for the technological advancements?	
		2.38/3	The curriculum has a good balance between theory and practical.	It is planned to conduct beyond experiments from the theory papers.





NPR

College of Engineering & Technology

Approved by AICTE, Affiliated to Anna University,
Accredited by NAAC WITH 'A' GRADE | Recognized by UGC under 2 (f)
Natham, Dindigul - 624 401. Web: www.nprcet.org



Alumni	470	2.37/3	How do you rate the courses which are skills related suiting to the industry included in the programs?	It is planned to attend internship, main project and in plant training in industries.
		2.32/3	How do you rate the domain used for designing the experiments in terms of the suitability of the tools to the domain?	Internal Assessment tools like Quiz, GD, etc were conducted.
		2.36/3	How do you rate the experiments in term of their relevance to the real life application?	Industrial visit, Industry internship is executed to have better understand in subject.
Employer	20	2.37/3	How do you the design of the curriculum on developing the employability?	We conduct bridge course and enhance student's communication and aptitude skills by placement cell.
		2.34/3	The design of curriculum on nurturing the entrepreneurship?	EDC cell has conducted more programs to make the students to the future demand through the Entrepreneurship.



Dr. J.SUNDARARAJAN,
B.E., M.Tech., Ph.D.

Principal

N.P.R. College of Engineering & Technology
Natham, Dindigul (Dt) - 624 401.