



CRITERION 1 - CURRICULAR ASPECTS

KEY INDICATOR 1.4. FEEDBACK SYSTEM

Metric No 1.4.2: Feedback process of the Institution

S.No	Content	Page No.
1	Feedback Policy	02
2	Feedback Analysis Report	03
3	Action Taken Report	20

Evidence on Website Link	https://www.nprcolleges.org/site/feedback?sch-id=75
---	---



Dr. J.SUNDARARAJAN,
B.E., M.Tech., Ph.D.,
Principal
M.P.R. College of Engineering & Technology
Natham, Dindigul (Dt) - 624 401.



FEEDBACK POLICY

Efficient functioning of an educational institution demands continuous refinement. Refinement needs feedback mechanism. NPRCET has adopted the feedback system that collects the suggestions from stakeholders on Teaching – Learning system of each programme. This helps to fine-tune Teaching – Learning system along with the curriculum. NPRCET follows the mechanism for collection of feedback from Students, Faculty, Alumni and Employers on Curriculum is explained in detail below.

Feedback Collection Process:

Feedback forms with questions those completely aligned along with Curriculum are designed in individual website. Generated links are shared with corresponding stakeholders for collecting the feedback. Feedback collection has done in specific time period. Responses for each question is recorded in website

Feedback Analysis Process:

- Stakeholder wise analysis report as has reviewed in department meeting along with Placement co-coordinator and IQAC co-coordinator.
- For each question target has been set before the collection of feedback. In the analysis report, questions with response below the set target, for Students feedback **75%** and **2.25** in 3 index scale, for Alumni, Faculty and Employer feedbacks **80%** and **2.4** in 3 index scale have been highlighted
- In the department meeting, actions are proposed and assigned to person/committees/ department/units. If the response is much below the target level, special committee has been formed to take corrective actions.

Execution of action proposed:

- The assigned person's committee/department/units special committees plan the road map executes the action proposed by IQAC
- Based on feedback received from stakeholders, add on courses are designed and offered. The curriculum of the existing add on courses are also updated as per employer recommendation to meet the industry expectation
- Swayam NPTEL and spoken tutorial courses are suggested for students
- Other initiatives such as Internship, Project based learning workshop, self-learning practices etc.,




Dr. J. SUNDARARAJAN,
B.E., M.Tech., Ph.D.,
Principal
N.P.R. College of Engineering & Technology
Natham, Dindigul (Dt) - 624 401



Students Feedback on Curriculum Info – Feedback Analysis Report

Academic Year: 2022-2023

Report Date: 15/02/2023

From: 09/01/2023 To: 10/02/2023

S.No	Question's	Excellent	Very Good	Good	Fair	Poor	Total Weightage	Percentage	3-Scale Weightage
1	How do you rate the sequence of the Courses that you have studied are in sequence to what you have studied in the previous semester?	390	229	118	55	38	3368	81.16	2.43
2	How do you rate the syllabus of the courses that you have studied in relation to the competencies expected out of the course?	400	220	135	52	23	3412	82.22	2.47
3	How do you rate the relevance of the units in Syllabus relevant to the course?	385	220	160	36	29	3386	81.59	2.45
4	How do you rate the sequence of the units in the course?	378	250	140	48	14	3420	82.41	2.47
5	How do you rate the allocation of the credits to the courses?	420	220	135	40	15	3480	83.86	2.52
6	How do you rate the distribution of the contact hours among the course components (L-T-P)?	370	220	160	55	25	3345	80.60	2.42
7	How do you rate the offering of the electives in terms of their relevance to the specialization	380	190	180	64	16	3344	80.58	2.42





	streams?								
8	How do you rate the electives offered in relation to the Technological advancements?	400	180	183	47	20	3383	81.52	2.45
9	How do you rate the relevance of the Text Books and reference books by their International recognition to the Courses?	370	230	165	45	20	3375	81.33	2.44
10	Rate the Size of syllabus in terms of the load on the student	370	175	200	55	30	3290	79.28	2.38
11	Rate the courses in terms of extra learning or self learning considering the design of the courses	270	214	230	89	27	3101	74.72	2.24
12	Rate the courses in terms of sequence of offering considering whether the preceding courses have been covered	365	220	140	65	40	3295	79.40	2.38
13	How do you Rate the loading of the courses in a semester?	426	203	130	41	30	3444	82.99	2.49
14	How do you rate the evaluation scheme designed for each of the course?	350	219	185	41	35	3298	79.47	2.38





NPR

College of Engineering & Technology

Approved by AICTE, Affiliated to Anna University,
Accredited by NAAC WITH 'A' GRADE | Recognized by UGC under 2 (f)
Natham, Dindigul - 624 401. Web: www.nprcet.org



15	How do you rate the objectives stated for each of the course?	370	199	175	58	28	3315	79.88	2.40
16	How do you rate competencies expected out of the course?	360	185	165	72	48	3227	77.76	2.33
17	How do you rate the composition of the courses in terms of Basic science, Engineering science, Humanities, Discipline core, discipline elective, open elective, project etc.?	370	196	156	68	40	3278	78.99	2.37
18	How do you rate the experiments in relation to the real life Applications?	295	198	198	90	49	3090	74.46	2.23
19	How do you rate the domain used for designing the experiments for the LAB components?	290	233	160	98	49	3107	74.87	2.25
20	How do you rate the courses having LAB components?	321	220	144	99	46	3161	76.17	2.29
AVERAGE SCORE							3306	79.66	2.39

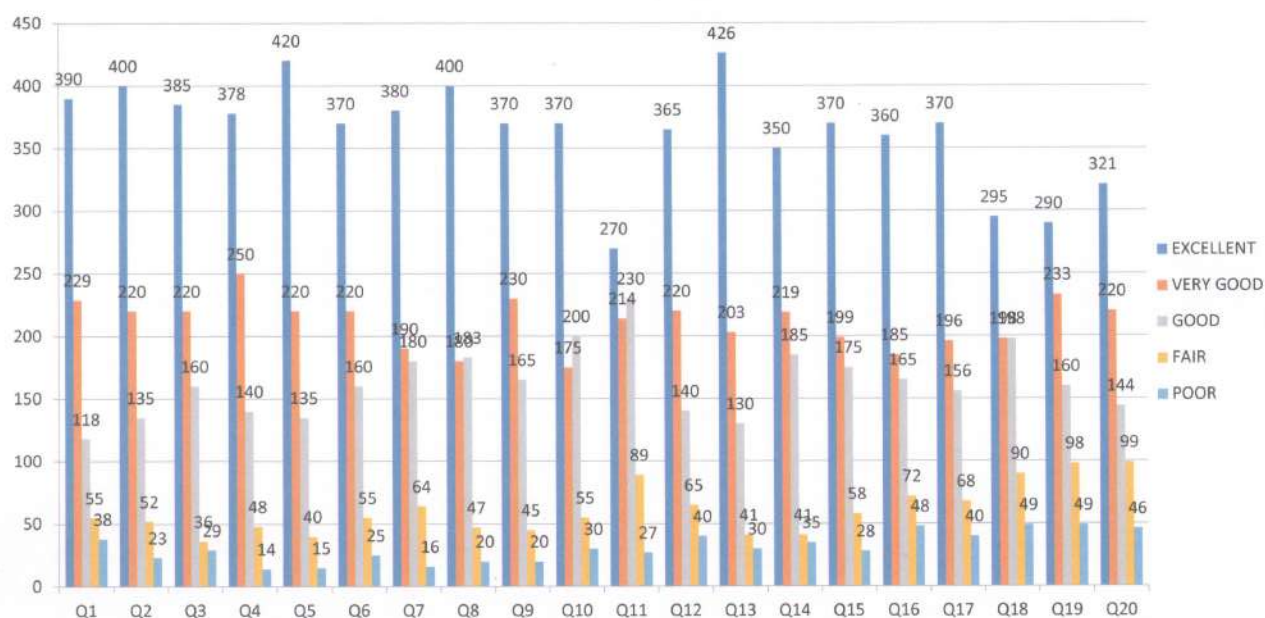


Dr. J. SUNDARARAJAN,
B.E., M.Tech., Ph.D.,

Principal

N.P.R. College of Engineering & Technology
Natham, Dindigul (Dt) - 624 401.

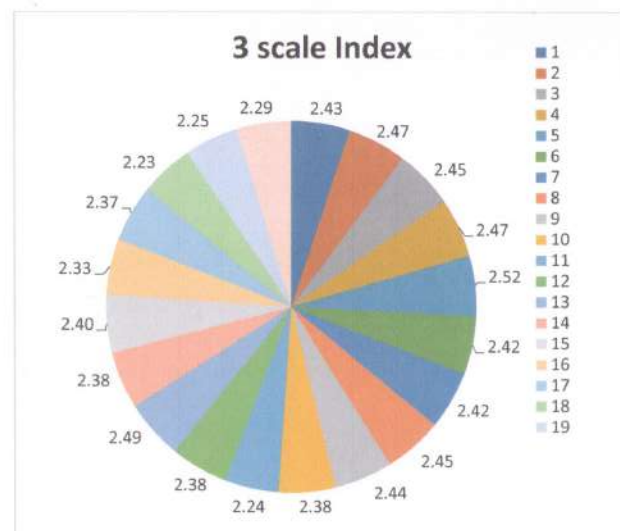
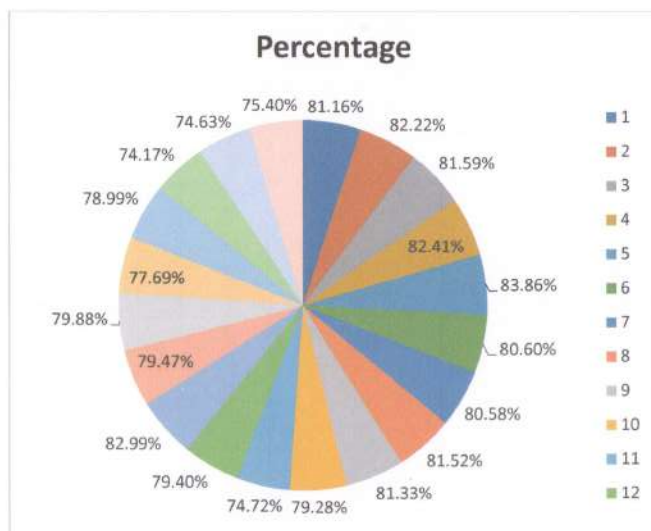
STUDENTS FEEDBACK



Students Feedback from 09/01/2023 to 10/02/2023



STUDENTS FEEDBACK



Students Feedback from 09/01/2023 to 10/02/2023





NPR

College of Engineering & Technology

Approved by AICTE, Affiliated to Anna University,
Accredited by NAAC WITH 'A' GRADE Recognized by UGC under 2 (f)
Natham, Dindigul - 624 401. Web: www.nprcet.org



Faculty Feedback on Curriculum Info – Feedback Analysis Report

Academic Year: 2022-2023

Report Date: 15/02/2023 From: 9/01/2023 To: 10/02/2023

S.No	Question's	Excellent	Very Good	Good	Fair	Poor	Total Weightage	Percentage	3-Scale Weightage
1	The Learning Objectives are clear and appropriate to the program	64	28	11	0	0	465	90.29	2.71
2	The curriculum and Syllabus are well organized and suitable to the program.	54	39	10	0	0	456	88.54	2.66
3	The text books/ reference books are well suited to the courses.	49	44	10	0	0	451	87.57	2.63
4	The system followed by the university for the design and development of curriculum is effective	35	36	32	0	0	415	80.58	2.42
5	Provision to update curriculum time to time.	32	36	35	0	0	409	79.42	2.38
6	How do you rate the distribution of contact hours among the course components?	47	33	23	0	0	436	84.66	2.54
7	The curriculum has a good balance between theory and practical.	34	31	38	0	0	408	79.22	2.38





NPR

College of Engineering & Technology

Approved by AICTE, Affiliated to Anna University,
Accredited by NAAC WITH 'A' GRADE | Recognized by UGC under 2 (f)
Natham, Dindigul - 624 401. Web: www.nprcet.org

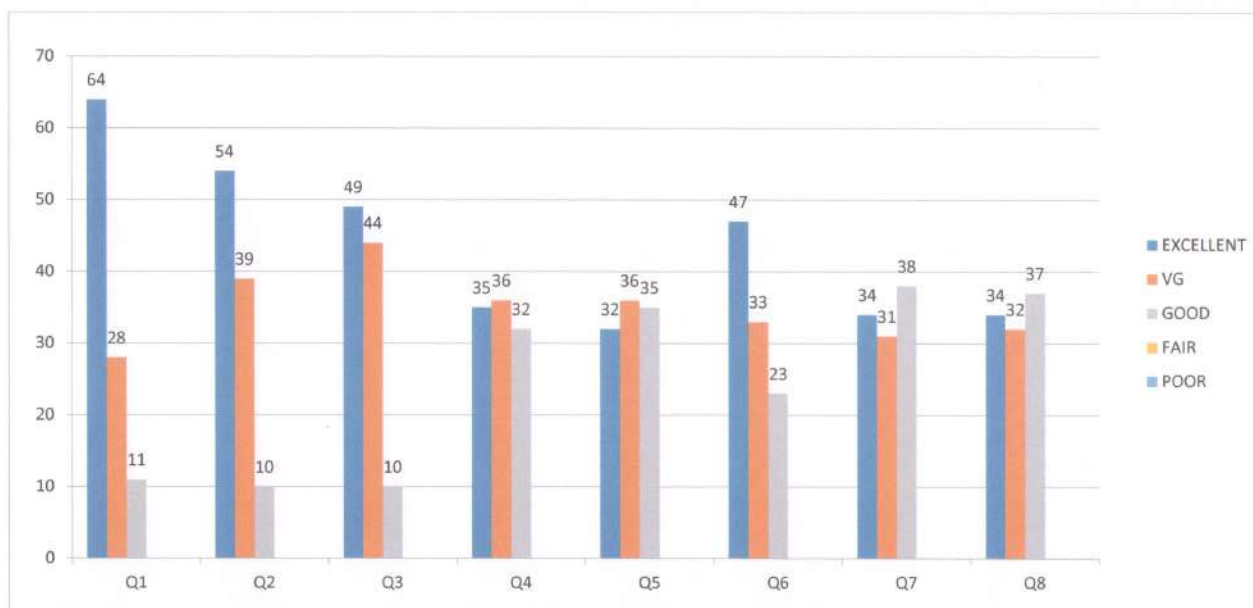


8	How do rate the electives offered in your program for the technological advancements?	34	32	37	0	0	409	79.42	2.38
AVERAGE SCORE							431.13	83.71	2.51

Dr. JSUNDARARAJAN,
B.E., M.Tech., Ph.D.,
Principal
N.P.R. College of Engineering & Technology
Natham, Dindigul (Dt) - 624 401.



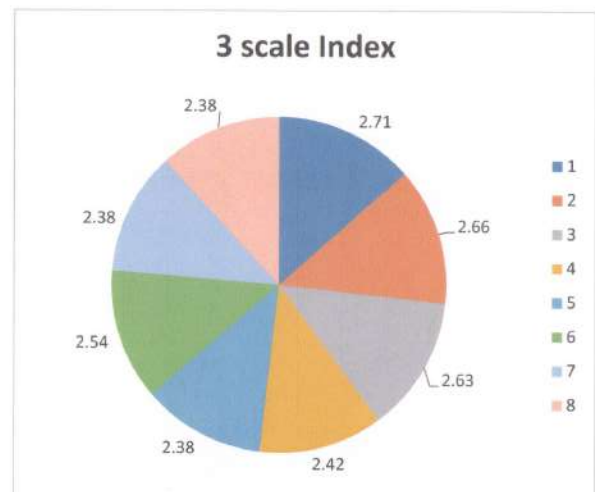
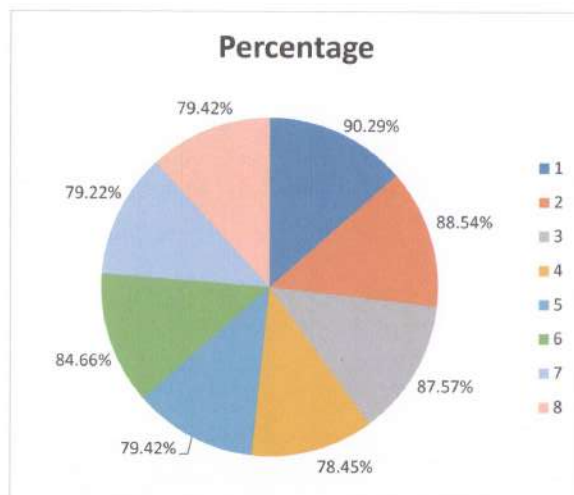
FACULTY FEEDBACK



Faculty Feedback From 9/01/2023 To 10/02/2023



FACULTY FEEDBACK



Faculty Feedback From 9/01/2023 To 10/02/2023





NPR

College of Engineering & Technology

Approved by AICTE, Affiliated to Anna University,
Accredited by NAAC WITH 'A' GRADE | Recognized by UGC under 2 (f)
Natham, Dindigul - 624 401. Web: www.nprcet.org



Employers Feedback on Curriculum Info – Feedback Analysis Report

Academic Year: 2022-2023 Report Date: 15/02/2023 From: 9/01/2023 To: 10/02/2023

S.No	Question's	Excellent	Very Good	Good	Fair	Poor	Total Weightage	Percentage	3-Scale Weightage
1	How do you rate the syllabus relevant to the real life situations?	12	6	2	0	0	90	90.00	2.70
2	How do you rate the learning values (skills, concepts, knowledge & analytical abilities) present in the syllabus?	10	9	1	0	0	89	89.00	2.67
3	How do you rate the relevance for implementation in projects?	11	9	0	0	0	91	91.00	2.73
4	How do you rate the gap filling ability of the available syllabus to bridge academics and Industry?	10	5	5	0	0	85	85.00	2.55
5	How do you rate the design of the curriculum on developing the employability?	6	7	7	0	0	79	79.00	2.37
6	How do you rate the design of	6	6	8	0	0	78	78.00	2.34





NPR

College of Engineering & Technology

Approved by AICTE, Affiliated to Anna University.
Accredited by NAAC WITH 'A' GRADE | Recognized by UGC under 2 (f)
Natham, Dindigul - 624 401. Web: www.nprcet.org



	curriculum on nurturing the entrepreneurship?								
7	How do you rate the syllabus updation regarding advanced topics?	9	7	4	0	0	85	85.00	2.55
8	How do you rate the available teaching tools to enhance the understanding of subjects?	8	6	6	0	0	82	82.00	2.46
AVERAGE SCORE							209	81.96	2.46


Dr. J.SUNDARARAJAN,

B.E., M.Tech., Ph.D.,

Principal

N.P.R. College of Engineering & Technology

Natham, Dindigul (Dt) - 624 401.

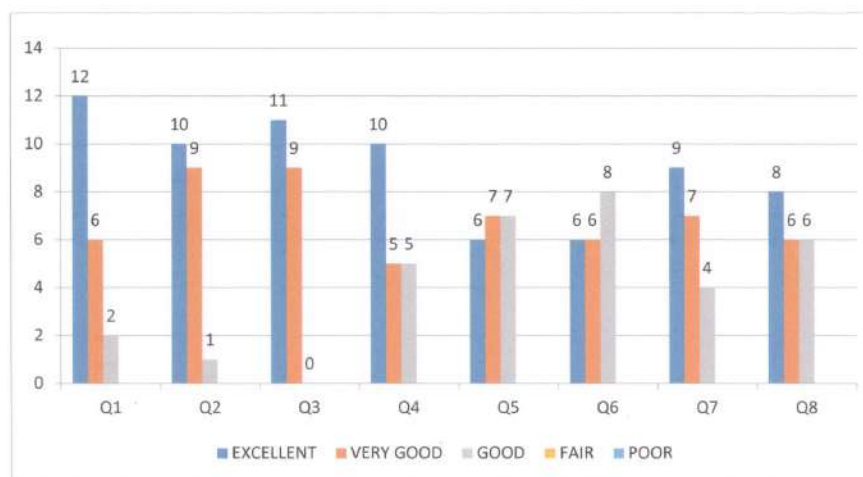




NPR
College of Engineering & Technology
Approved by AICTE, Affiliated to Anna University,
Accredited by NAAC WITH 'A' GRADE | Recognized by UGC under 2 (f)
Natham, Dindigul - 624 401. Web: www.nprcet.org



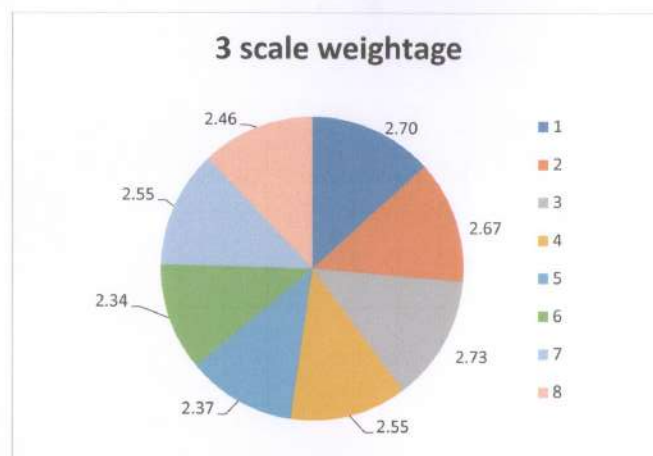
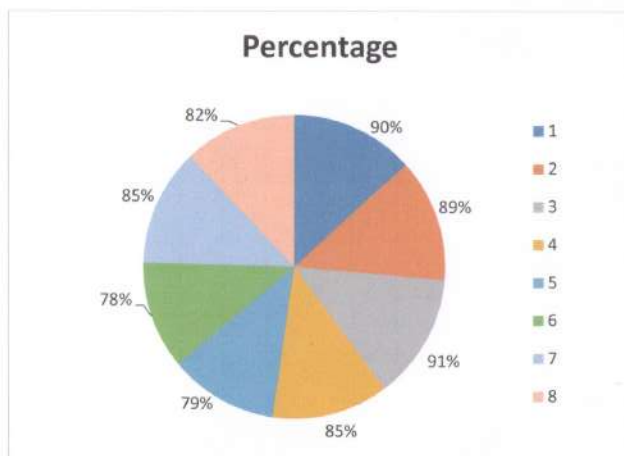
EMPLOYER FEEDBACK



Employer Feedback From 9/01/2023 To 10/02/2023



EMPLOYER FEEDBACK



Employer Feedback From 9/01/2023 To 10/02/2023





NPR

College of Engineering & Technology

Approved by AICTE, Affiliated to Anna University,
Accredited by NAAC WITH 'A' GRADE | Recognized by UGC under 2 (f)
Natham, Dindigul - 624 401. Web: www.nprcet.org



Alumni Feedback on Curriculum Info – Feedback Analysis Report

Academic Year: 2022-2023 Report Date: 15/02/2023 From: 9/01/2023 To: 10/02/2023

S.No	Question's	Excellent	Very Good	Good	Fair	Poor	Total Weightage	Percentage	3-Scale Weightage
1	How do you rate relevance of the courses in relation to the program?	270	110	82	8	0	2052	87.32	2.62
2	How do you rate the sequence of the courses included into the programs?	250	130	70	20	0	2020	85.96	2.58
3	How do you rate the competencies in relation to the course content?	245	129	75	21	0	2008	85.45	2.56
4	How do rate the sequence of the topics in the units?	235	125	96	14	0	1991	84.72	2.54
5	Rate the offering of the in relation to the specialization streams?	220	143	85	22	0	1971	83.87	2.52
6	How do you rate the offering of the electives in relation to the Technological advancements?	242	124	87	17	0	2001	85.15	2.55
7	How do you rate the courses which are skills related suiting to the Industry included into the programs?	190	112	123	45	0	1857	79.02	2.37






NPR

College of Engineering & Technology

Approved by AICTE, Affiliated to Anna University,
Accredited by NAAC WITH 'A' GRADE | Recognized by UGC under 2 (f)
Natham, Dindigul - 624 401. Web: www.nprcet.org



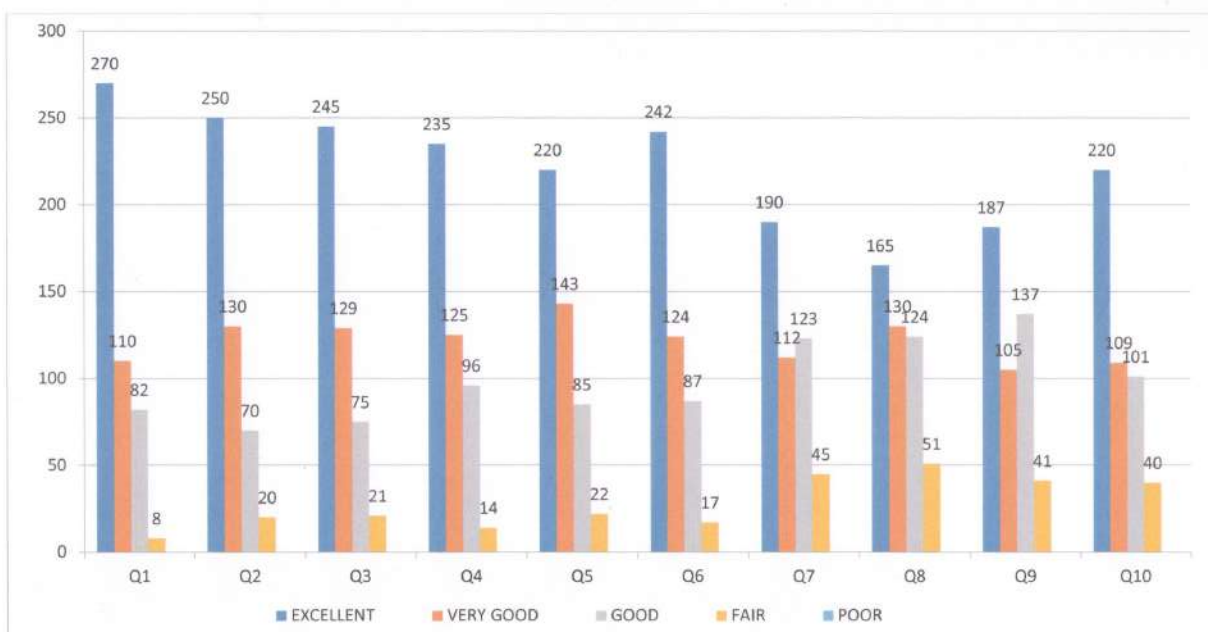
8	How do you rate the domain used for designing the experiments in terms of the suitability of the Tools to the domain?	165	130	124	51	0	1819	77.40	2.32
9	How do you rate the experiments in terms of their relevance to the real life application?	187	105	137	41	0	1848	78.64	2.36
10	How do you rate the courses that you have learnt in relation to your current Job?	220	109	101	40	0	1919	81.66	2.45
AVERAGE SCORE							1948.60	82.92	2.49


Dr. J. SUNDARARAJAN,
B.E. M.Tech., Ph.D.,
Principal

N.P.R. College of Engineering & Technology
Natham, Dindigul (Dt) - 624 401.



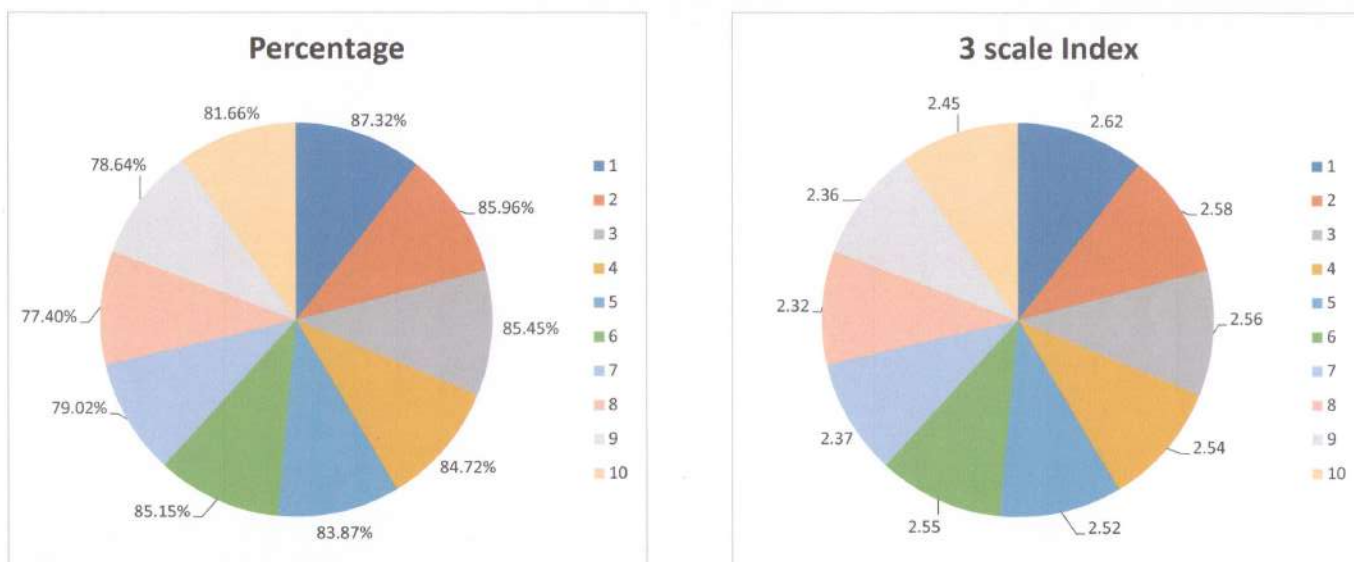
ALUMNI FEEDBACK



Alumni Feedback From 09/01/2023 To 10/02/2023



ALUMNI FEEDBACK



Alumni Feedback From 09/01/2023 To 10/02/2023





Action Taken Report for the Analysis of Feedback collected from Students, Faculty, Alumni and Employer

Feedback Collected From	Number of Responses	Threshold	Questionnaires with less threshold	Action Taken
Student	830	2.24/3	Rate the courses in terms of extra learning or self-learning considering the design of the courses?	Students are motivated to attend Add-On courses, Symposium and on design skills.
		2.23/3	How do you rate the experiments in relation to the real-life Applications?	Industrial visit, Industry internship is executed to have better understanding in relevant subjects.
		2.25/3	How do you rate the domain used for designing the experiments for lab components?	More mini projects are planned to give students from upcoming semester.
Faculty	103	2.38/3	Provision to update curriculum time to time.	It is planned to analyses the curriculum gap and to include the content beyond syllabus as per the industrial need.
		2.38/3	How do rate the electives offered in your program for the technological advancements?	
		2.38/3	The curriculum has a good balance between theory and practical.	It is planned to conduct beyond experiments from the theory papers.





NPR

College of Engineering & Technology

Approved by AICTE, Affiliated to Anna University.
Accredited by NAAC WITH 'A' GRADE | Recognized by UGC under 2 (f)
Natham, Dindigul - 624 401. Web: www.nprcet.org



Alumni	470	2.37/3	How do you rate the courses which are skills related suiting to the industry included in the programs?	It is planned to attend internship, main project and in plant training in industries.
		2.32/3	How do you rate the domain used for designing the experiments in terms of the suitability of the tools to the domain?	Internal Assessment tools like Quiz, GD, etc were conducted.
		2.36/3	How do you rate the experiments in term of their relevance to the real life application?	Industrial visit, Industry internship is executed to have better understand in subject.
Employer	20	2.37/3	How do you the design of the curriculum on developing the employability?	We conduct bridge course and enhance student's communication and aptitude skills by placement cell.
		2.34/3	The design of curriculum on nurturing the entrepreneurship?	EDC cell has conducted more programs to make the students to the future demand through the Entrepreneurship.



Dr. J.SUNDARARAJAN

B.E., M.Tech., Ph.D.

Principal

N.P.R. College of Engineering & Technology,
Natham, Dindigul (TN) - 624 491.