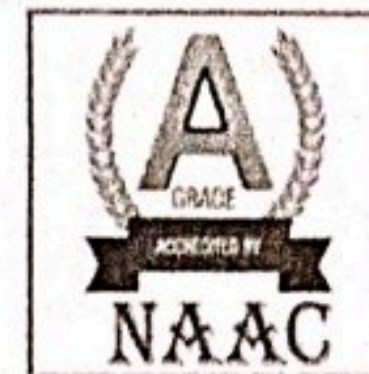




NPR

COLLEGE OF ENGINEERING & TECHNOLOGY (AUTONOMOUS)



Approved by AICTE, New Delhi & Affiliated to Anna University, Chennai | Accredited by NAAC with 'A' GRADE
Recognized by UGC under 2 (f) | ISO 9001:2015 Certified | Web: www.nprcolleges.org | E-Mail: nprcetprincipal@nprcolleges.org
NPR Nagar, Natham - 624 401, Dindigul Dist, Tamil Nadu. Ph: 04544 - 246500, 501, 502.

Curriculum Design and Develop

The process of the credit range and distribution begins with adhering to guidelines from regulatory bodies (UGC, AICTE, Anna University). The Academic Council approves the credit range and distribution. Feedback is gathered from key stakeholders such as faculty, industry experts, and alumni. Department reviews syllabi from peer institutions for best practices. The curriculum and syllabus are presented to the Board of Studies for expert review and approval. Final approval is given by the Academic Council, after which the documents are published on the college website. Department prepares a semester-wise academic calendar outlining important dates. The academic calendar is made available to all faculty and students. HOD meets with faculty to discuss the upcoming semester. Course-in-charge prepares lesson plans, assessment details, and schedules.. Faculty maintain course files containing lesson plans, assessment papers, and student marks. HOD reviews course files to ensure progress and compliance. After completing the course, the CO-PO-PSO mapping is done and submitted to the Department IQAC for quality assurance. The process ends with the submission of the course file to IQAC, ensuring the continuous monitoring of quality.

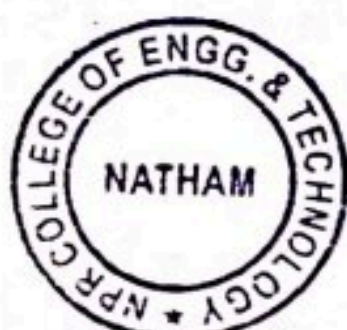
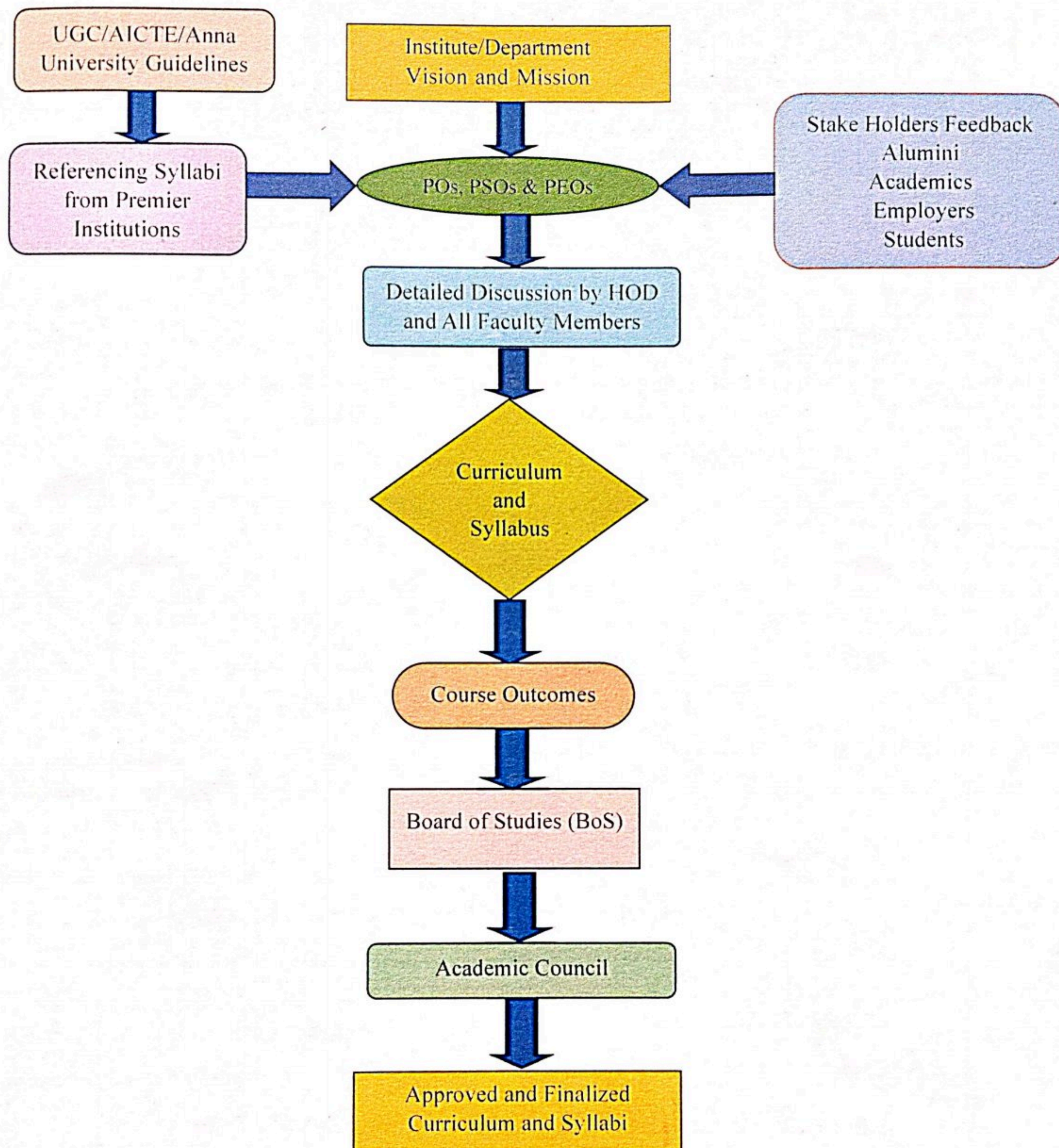



Dr. R. MARUTHU KANNAN, M.E., Ph.D.,

Principal

NPR College of Engineering and Technology
Natham, Dindigul (DT)-624 401

CURRICULUM AND SYLLABI DEVELOPMENT FLOWCHART




Dr. B. MARUTHU KANNAN, ME., Ph.D.,
Principal
NPR College of Engineering and Technology
Natham, Dindigul (Dt)-624 401

CURRICULUM AND SYLLABI DEVELOPMENT FLOWCHART

